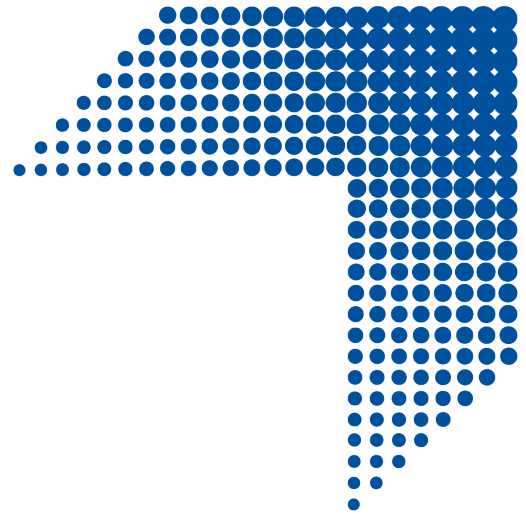


# DMG DentaMile

Complete, validated solution  
for the digital workflow





# A complete digital workflow solution from DMG: Innovations in 3D printing

**Our dedication to streamlining the dental professionals' daily routines drives us to continuously improve our product offerings. As leaders in restorative materials and prosthetics, we offer a complete 3D printing solution.**

Discover the state-of-the-art 3D digital printing solution that enables a more simplified, validated digital workflow.

Featuring advanced 3D technology and resin materials exclusively from DMG, our integrated solution includes: the new 3Demax 3D printer, 3Dewash and 3Decure units with optimized LuxaPrint resins, accessories and cloud-based DentaMile connect software.

Our comprehensive line of hardware, software and resin materials provide:

- ↗ Unprecedented quality
- ↗ Increased production
- ↗ Reproducible precision
- ↗ Coordinated processes
- ↗ Intuitive operability
- ↗ Predictable outcomes
- ↗ Guaranteed regulatory compliance



Fast Print Speeds



Easy & User-Friendly



Validated Workflow

# DMG 3Demax:

## Maximum reliability, minimal footprint

The 3Demax is a compact, high-precision, high-speed 3D printer that can be used for a wide range of applications using digital light processing (DLP) technology.

### POSSIBILITIES IN 3D

With ultra-fine resolution and a generously sized build plate, the 3Demax accurately produces surgical guides, burn-out casting molds, mouth guards, occlusal splints, crowns and bridges, physical models and more.

### HIGH SPEED

The patented “Force Feedback” technology accelerates printing by up to 50%. Using a highly sensitive load cell, each layer process is carefully controlled during printing, minimizing the risk of misprints.

### MAXIMUM SAFETY AND RELIABILITY

Radio frequency identification (RFID) technology makes the 3Demax easy to calibrate, eliminating misapplications by ensuring automatic material identification. In addition, process data documentation can be transparently verified and traced at any time, ensuring full compliance of Medical Device Regulation (MDR) safety requirements.



### FEATURES AND BENEFITS

- High-speed precision processing
- Easy and user-friendly system
- Large build plate for multiple device production
- Software supported validated workflow
- Indicated for a wide range of 3D dental applications
- Accepts all standard STL files
- RFID technology for automated material identification

### TECHNICAL DATA

Size (width/depth/height)	335 x 349 x 541 mm
Build area	130 x 75 x 90 mm
Max. workpiece height	90 mm
Native pixel resolution	+ / - 34 µm
Connections	WLAN, TCP/IP, USB
Wavelength	385 nm
Weight	approx. 33 kg



Fast Print Speeds



Easy & User-Friendly



Validated Workflow

# DentaMile Lab 5 Pro:

## A professional printer for high volume and efficiency

Designed to meet the high-volume demands of dental laboratories, the DentaMile Lab 5 Pro printer is packed with innovative features, such as high precision 4K light source to deliver high-quality 3D printed devices while optimizing your workflow.

Equipped with both an automated separation module and resin reservoir refill, following print jobs, parts are automatically separated from the build platform and deposited in a collection basket. The resin reservoir is refilled and ready for your next print job, automatically.



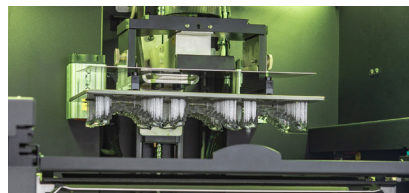
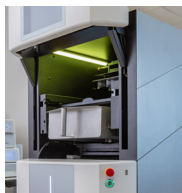
### FEATURES AND BENEFITS

- Large build area for multiple device production
- High-precision 4K light source
- RFID technology for automated material identification
- Fast print speeds via Force Feedback technology
- Heating of print chamber up to 95° F / 35° C
- Compatible with standard dental CAD software (STL files)
- Large status LED bar
- Automatic hands-free hood opening
- Automatic separation of the finished printed devices (ASM)
- Automatic resin reservoir refill
- Intelligent connectivity with post-processing units
- Software-supported, validated workflow for reproducible dental devices

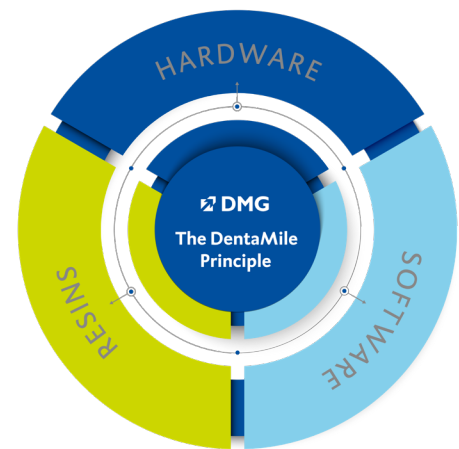
*\*Also available without the automatic separation module.*

### TECHNICAL DATA

Size (width/depth/height)	23.62 x 22.44 x 65.35 in 600 x 570 x 1660 mm
Build area (length/width/height)	DentaMile Lab 5: 9.09 x 5.11 x 11.81 in 231 x 130 x 300 mm  DentaMile Lab 5 Pro: 9.09 x 5.11 x 3.93 in 231 x 130 x 100 mm
Max. workpiece height	DentaMile Lab 5: 11.81 in / 300 mm  DentaMile Lab 5 Pro: 3.93 in / 100 mm
Native pixel resolution	+ / - 30 µm
Connections	WLAN, TCP/IP, USB
Weight	DentaMile Lab 5: 242.50 lbs / 110 kg  DentaMile Lab 5 Pro: 263.55 lbs / 120 kg
Resolution	4K (3840 x 2160 px) with 385 nm LED
Wavelength	385 nm
Layer thickness	≥50 µm



# A complete digital solution for an optimal digital workflow



The following modules are part of the complete DMG 3D digital printing solution:

## DMG 3DEWASH

The DMG 3Dewash is a fully integrated unit that is designed for the washing of 3D printed devices using a DLP process. The pre-set programs systematically wash the remaining non-polymerized resin from the dental application.

## DMG 3DECURE

The DMG 3Decure is a fully integrated curing unit that is used for the curing of 3D resins with 360° illumination. The pre-set programs lock in the printed mechanical properties ensuring proper curing according to individual resin specifications.

### TECHNICAL DATA

Size (width/depth/height)	230 x 450 x 270 mm
Volume	130 x 75 x 60 mm
Working time	4-8 minutes, depending on material
Cleaning agent	isopropanol or methyl alcohol, depending on material
Connections	WLAN/LAN

### TECHNICAL DATA

Size (width/depth/height)	230 x 380 x 270 mm
Volume	130 x 75 x 60 mm
Working time	depending on material
Connections	WLAN/LAN, USB



*The 3Demax printer is extremely fast, versatile, and accurate. The “Force Feedback” technology delivers on the printing speed without compromising accuracy. The complete solution facilitates our digital production with its ease of use and the integrated and validated workflow. The small footprint and ability to stack devices adds to its versatility and convenience.*

- Edmonds Dental Prosthetics



Fast Print Speeds



Easy & User-Friendly



Validated Workflow

# Complete LuxaPrint resins for 3D printing

LuxaPrint products are high-quality, light-cured resins for use with digital light processing printers that work at a wavelength of 385nm. Each material combines fast printing with outstanding accuracy for all your 3D printing needs.



## LUXAPRINT TRAY

A Class I medical device that is suitable for all types of 3D printed custom impression trays.

- Quick and easy to print
- Extremely stable for distortion-free impressions
- Exact fit



## COLORS

LuxaPrint	Colors
LuxaPrint Ortho Plus	Transparent
LuxaPrint Ortho Flex	Transparent
LuxaPrint Ortho	Transparent
LuxaPrint Model	Beige/Grey/Ivory/Transparent
LuxaPrint Gingiva	Pink
LuxaPrint Tray	Turquoise
LuxaPrint Cast	Dark Red

## LUXAPRINT MODEL

A 3D printing resin used for the fabrication of highly precise and esthetically demanding 3D printed models. It is suitable for the production of thermoformed splints.

- Fine, smooth surface structure delivers the highest detail
- Dimensionally stable
- Highly precise for esthetically demanding models



## LUXAPRINT ORTHO

A light-cured 3D printer resin that is indicated for the fabrication of highly precise surgical guides and splints.

- Highly precise for an exact fit of the surgical guide and splint
- 99% transparency
- Autoclavable



Fast Print Speeds



Easy & User-Friendly



Validated Workflow

## LUXAPRINT ORTHO PLUS

Indicated for the manufacturing of orthodontic and dental appliances such as mouthguards, nightguards, splints and tooth positioners.

- ↗ Transparent
- ↗ Exact fit
- ↗ Not brittle



## LUXAPRINT CAST

Indicated for the fabrication of residue-free burn-out molds (e.g. model and denture framework castings, crowns and bridges).

- ↗ Fine surface structure
- ↗ Dimensionally stable
- ↗ Easy to cast (no cracks)



## LUXAPRINT ORTHO FLEX

A biocompatible material for the additive production of flexible splints like bleaching trays or indirect bonding trays.

- ↗ Versatile
- ↗ Optimal elasticity
- ↗ Highly tear resistant
- ↗ Near-natural transparency
- ↗ Easy to clean



## LUXAPRINT GINGIVA

Ideal for the precise replication of gingival masks to help simulate the periodontal status for dental laboratory or master models.

- ↗ Optimal elasticity
- ↗ Highly tear resistant
- ↗ Dimensionally stable
- ↗ Minimal shrinkage
- ↗ Natural looking



Fast Print Speeds



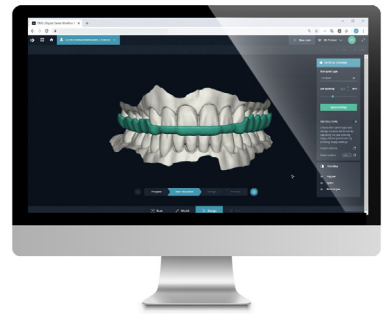
Easy & User-Friendly



Validated Workflow

# DentaMile connect

## Designed with you in mind



With the integrated digital workflow approach of DentaMile connect, software, hardware and materials interconnect perfectly, **making processing and 3D fabrication easier, faster and safer than ever.**

### Validated & secure

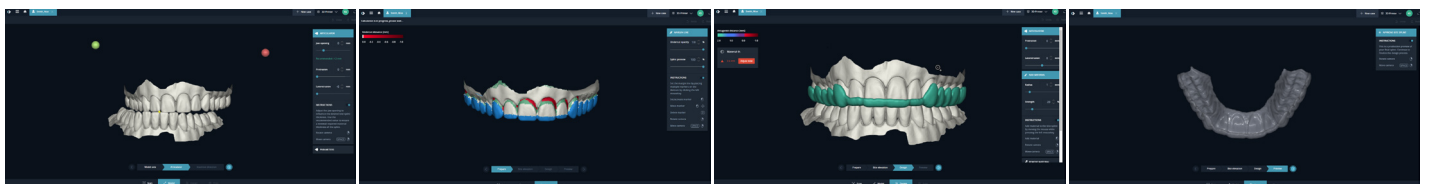
Proprietary DMG design software ensures a secure and validated medical device production workflow with maximum data security. Errors are minimized and new applications are accessible without any added technical effort. **No special system requirements apply.**

### Cloud-based & versatile

**DentaMile connect can be used with any operating system**, and getting started is easy: all you need is a standard modem, computer/laptop and internet connection.

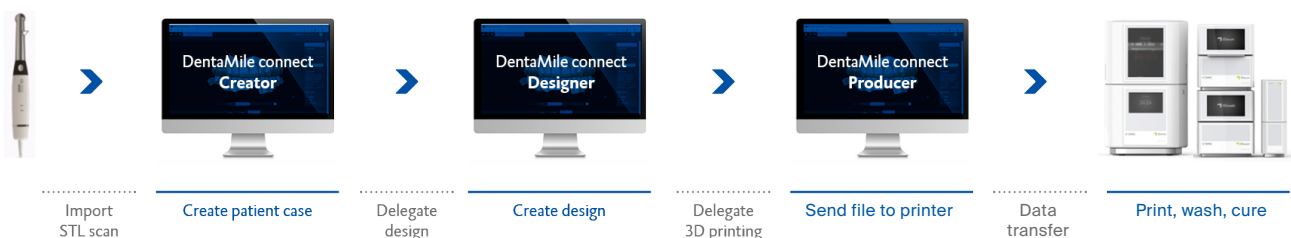
### FEATURES AND BENEFITS

- Cloud-based design software
- Connectivity to dental labs, designers, and practices - perfect for multi-practice locations
- No software installation needed
- Instant usability (minimal training required)
- Intuitive user interface
- Simple import and editing of STL files
- Automatic nesting and slicing
- Simplified work processes increase efficiency
- Validated, on-demand medical device fabrication
- Case delegation: Easily send STL scans to users
- Four convenient license options: Creator, Creator Plus, Designer and Producer
- Easily meet MDR standards



- Fully adjustable virtual articulator
- Determination of the splint edge
- View of splint in entire jaw
- Final splint design

### WORKFLOW EXAMPLE



Fast Print Speeds



Easy & User-Friendly

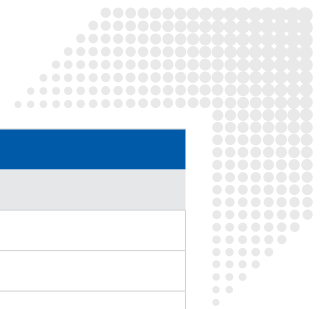


Validated Workflow



# Ordering Information

3D Printing		
Item #	Product	Contents
170904	DentaMile connect Creator	DentaMile connect Creator License
170905	DentaMile connect Creator Plus	DentaMile connect Creator Plus License
170906	DentaMile connect Designer	DentaMile connect Designer License
170907	DentaMile connect Producer	DentaMile connect Producer License
171355	DMG 3Demax <i>(accessories included)</i>	1 3D Digital Printer with Force Feedback Technology, 1 Build Plate, 1 Resin Tank, 1 Resin Tank Cover, 1 Netfabb Slicing Software, 1 USB Thumb Drive, 1 Spatula, 1 Silicon Scraper, 1 UV-Safety Glasses, 1 Tool Set, 1 Box of Gloves, 2 Power Cords (Type F & Type B), 1 ACCS-Calibration Sensor and Sensor Holder, 1 Positioning Aid for ACCS-Calibration Sensor, 1 Positioning Aid for ACCS-Sensor
170352	DentaMile Lab 5 <i>(accessories included)</i>	1 3D printer DentaMile Lab 5 including Force Feedback, 1st year maintenance contract, 8hr partner remote installation support, 1 slicing software, 1 resin reservoir, 1 resin reservoir cover, 1 build platform, 1 calibration sensor, 1 calibration plate, 1 spatula, 1 scraper, 1 UV-safety glasses, 1 tool set, 1 lens cloth, 1 USB memory stick
170353	DentaMile Lab 5 Pro <i>(accessories included)</i>	1 3D printer DentaMile Lab 5 Pro including Force Feedback, 1 automatic separation module (ASM) (incl. min. & max. sensors), automatic resin refill system (incl. min. & max. sensors), 1st year maintenance contract, 8hr partner remote installation support; 1 slicing software, 1 resin reservoir, 1 resin reservoir cover, 1 build platform, 1 calibration sensor, 1 calibration plate, 1 spatula, 1 scraper, 1 UV-safety glasses, 1 tool set, 1 lens cloth, 1 USB memory stick, 1 knife for ASM, 1 refill tube, 1 collection basket
171317	DMG 3Decure	1 3D Printing Curing Unit, 1 Power Supply, 2 Power Cords (Type F & Type B)
171316	DMG 3Dewash	1 3D Printing Washing Unit, 1 Power Supply, 2 Power Cords (Type F & Type B)
171264	LuxaPrint Model	1-200gm Bottle, Beige (385/405nm)
171272	LuxaPrint Model	1-200gm Bottle, Ivory (385/405nm)
171294	LuxaPrint Model	1-200gm Bottle, Gray (385/405nm)
171267	LuxaPrint Model	1-200gm Bottle, Transparent (385/405nm)
171200	LuxaPrint Model	1-500gm Bottle, Beige (385/405nm)
171274	LuxaPrint Model	1-500gm Bottle, Ivory (385/405nm)
171292	LuxaPrint Model	1-500gm Bottle, Gray (385/405nm)
171268	LuxaPrint Model	1-500gm Bottle, Transparent (385/405nm)
171201	LuxaPrint Model	1-1,000gm Bottle, Beige (385/405nm)
171276	LuxaPrint Model	1-1,000gm Bottle, Ivory (385/405nm)
171293	LuxaPrint Model	1-1,000gm Bottle, Gray (385/405nm)
171269	LuxaPrint Model	1-1,000gm Bottle, Transparent (385/405nm)
171265	LuxaPrint Model	1-2,000gm Bottle, Beige (385/405nm)
171279	LuxaPrint Model	1-2,000gm Bottle, Ivory (385/405nm)
171263	LuxaPrint Model	1-2,000gm Bottle, Grey (385/405nm)
171270	LuxaPrint Model	1-2,000gm Bottle, Transparent (385/405nm)
171271	LuxaPrint Model	1-5,000gm Bottle, Transparent (385/405nm)
171266	LuxaPrint Tray	1-200gm Bottle, Turquoise (385/405nm)
171204	LuxaPrint Tray	1-500gm Bottle, Turquoise (385/405nm)
171205	LuxaPrint Tray	1-1,000gm Bottle, Turquoise (385/405nm)
171258	LuxaPrint Tray	1-2,000gm Bottle, Turquoise (385/405nm)
171261	LuxaPrint Tray	1-5,000gm Bottle, Turquoise (385/405nm)
171262	LuxaPrint Cast	1-200gm Bottle, Dark Red (385/405nm)
171202	LuxaPrint Cast	1-500gm Bottle, Dark Red (385/405nm)



### 3D Printing

Item #	Product	Contents
171203	LuxaPrint Cast	1-1,000gm Bottle, Dark Red (385/405nm)
171256	LuxaPrint Ortho	1-200gm Bottle, Transparent (385nm)
171206	LuxaPrint Ortho	1-500gm Bottle, Transparent (385nm)
171207	LuxaPrint Ortho	1-1,000gm Bottle, Transparent (385nm)
171217	LuxaPrint Ortho	1-2,000gm Bottle, Transparent (385nm)
171218	LuxaPrint Ortho	1-5,000gm Bottle, Transparent (385nm)
171259	LuxaPrint Ortho Plus	1-200gm Bottle, Transparent (385nm)
171210	LuxaPrint Ortho Plus	1-500gm Bottle, Transparent (385nm)
171211	LuxaPrint Ortho Plus	1-1,000gm Bottle, Transparent (385nm)
171215	LuxaPrint Ortho Plus	1-2,000gm Bottle, Transparent (385nm)
171216	LuxaPrint Ortho Plus	1-5,000gm Bottle, Transparent (385nm)
171273	LuxaPrint Ortho Flex	1-200gm Bottle, Transparent (385nm)
171250	LuxaPrint Ortho Flex	1-500gm Bottle, Transparent (385nm)
171252	LuxaPrint Ortho Flex	1-1,000gm Bottle, Transparent (385nm)
171281	LuxaPrint Ortho Flex	1-2,000gm Bottle, Transparent (385nm)
171284	LuxaPrint Ortho Flex	1-5,000gm Bottle, Transparent (385nm)
171278	LuxaPrint Gingiva	1-200gm Bottle, Pink (385nm)
171240	LuxaPrint Gingiva	1-500gm Bottle, Pink (385nm)
171241	LuxaPrint Gingiva	1-1,000gm Bottle, Pink (385nm)

### 3D Printing Accessories

170319	DMG 3Demax Resin Reservoir	1 Resin Reservoir
170320	DMG 3Demax Resin Reservoir Cover	1 Resin Reservoir Cover
170321	DMG 3Demax Resin Reservoir Storage Cabinet	1 3Demax Resin Reservoir Storage Cabinet
170322	DMG 3Demax Build Platform	1 3Demax Build Platform
170340	DMG 3Dewash Cleaning Reservoir	1 3Dewash Cleaning Reservoir
171343	DMG 3Dewash Empty Bottle	1 3Dewash Empty Bottle (6x800ml)
170401	DMG DentaMile Lab 5 Reservoir Tank	1 DMG DentaMile Lab 5 Resin Reservoir
170402	DMG DentaMile Lab 5 Reservoir Tank Cover	1 DMG DentaMile Lab 5 Resin Reservoir Cover
170403	DMG DentaMile Lab 5 Reservoir Storage Box	1 DMG DentaMile Lab 5 Resin Reservoir Storage Cabinet
170405	DMG DentaMile Lab 5 Build Platform	1 DMG DentaMile Lab 5 Build Platform
170410	DMG DentaMile Lab 5 Pro Cutting Knife	1 DMG DentaMile Lab 5 Pro Cutting Knife
170411	DMG DentaMile Lab 5 Pro Catch Basket	1 DMG DentaMile Lab 5 Pro Collection Basket
170412	DMG DentaMile Lab 5 Pro Refill Hose	1 DMG DentaMile Lab 5 Pro Refill Hose



DMG America, LLC  
65 Challenger Road, Suite 340, Ridgefield Park, NJ 07660  
tel: 800.662.6383 email: [info@dmg-america.com](mailto:info@dmg-america.com)  
web: [www.dmg-america.com](http://www.dmg-america.com)

