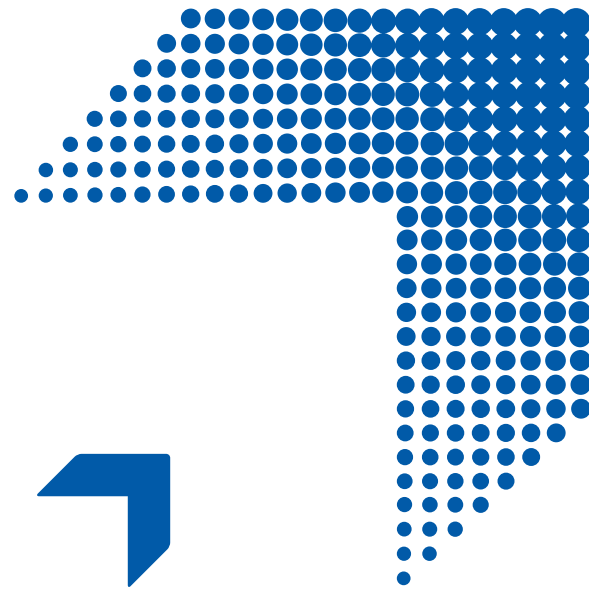




Product Catalog

Quality Meets Innovation.



Dear valued partners, clients, and friends of DMG:

As you look through this catalog you'll notice some exciting new product and service offerings we've added to the DMG portfolio that were designed to further fulfill our mission: *streamlining the lives of dental professionals by providing quality dental materials*. These include our innovative glass ionomer material, DeltaFil (coming soon), and our DMG DentaMile 3D printing solution.

We've also built the catalog to optimize your user experience and make it easier to find the right products for your dental care needs.

3D printing, your way

Over the last decade, DMG has meticulously devoted much of its research to developing a comprehensive digital workflow that allows hardware, software, and materials to interconnect perfectly, allowing the user to have a seamless, positive experience. You can find more information about our award-winning software, powerful printers, efficient post-processing units, and full line of quality resin materials at: dmg-america.com/3dprinting.

An education first approach

We're committed to providing education opportunities, scholarly content, and resources for all types of dental professionals. Whether you're interested in Continuing Education, case studies or training opportunities, you can visit dmg-connect.com; a content-based website that's designed with you, and learning, in mind.

With kind regards,

George Wolfe

President, DMG America

Table of Contents

HYGIENE

Kolorz® ClearShield™ 5% Sodium Fluoride Varnish	6
Kolorz® Sixty-Second Fluoride Foam	7
Kolorz® Sixty-Second Fluoride Gel	7
Kolorz® Neutral Fluoride Foam	7
Kolorz® Topical Anesthetic Gel	8
Kolorz® Prophylaxis Paste	8
Ordering Information	9-10

CARIES INFILTRATION

Icon® Proximal	11-12
Icon® Smooth Surface	11-12
Icon® Etch Refills	11-12
MiniDam	12
Ordering Information	12

IMPRESSION

Honigum Pro Light/QuadFast Light	13-14
Honigum Pro Heavy/QuadFast Heavy	13-14
Honigum Pro Putty	13-14
Honigum Pro Mono	13-14
Honigum	14
O-Bite	15
LuxaBite	16
StatusBlue	17
Tray Adhesive	17
MixStar eMotion	18
Ordering Information	19-20

PROVISIONAL CARE

Luxatemp® Automix Plus	21
Luxatemp® Ultra	22
Luxatemp® Solar	22
Luxatemp® Fluorescence	22
TempoCem® ID	23
TempoCem®	23
TempoCem® NE	23
LuxaGlaze®	24
LuxaFlow® Ultra	24
LuxaFlow®	24
Ordering Information	25-26

LONG-TERM CARE

LuxaCrown®	27-28
Ordering Information	28

PERMANENT CARE

LuxaCore® Z Dual	29
DeltaFil	30
PermaCem 2.0	31
PermaCem Dual	31
LuxaPost	32
Spirapost	33
Ecosite Bulk Fill	34
DMG Composite Gun	35
Ecosite Bond	35
Constic	36
Ionosit Baseline	37
Vitique	38
Vitique Silane	39
Anterior/Posterior Hybrid Composite	39
40% Etch Gel	39
LuxaBond Total Etch	40
Alloys	41
Variable Speed Amalgamator	42
Ordering Information	43-46

DIGITAL TECHNOLOGY

DMG DentaMile 3D Printing Solution	47
DentaMile connect	48
3Demax	49
3Dewash	49
3Decure	49
LuxaPrint	50-51
Ordering Information	52-53

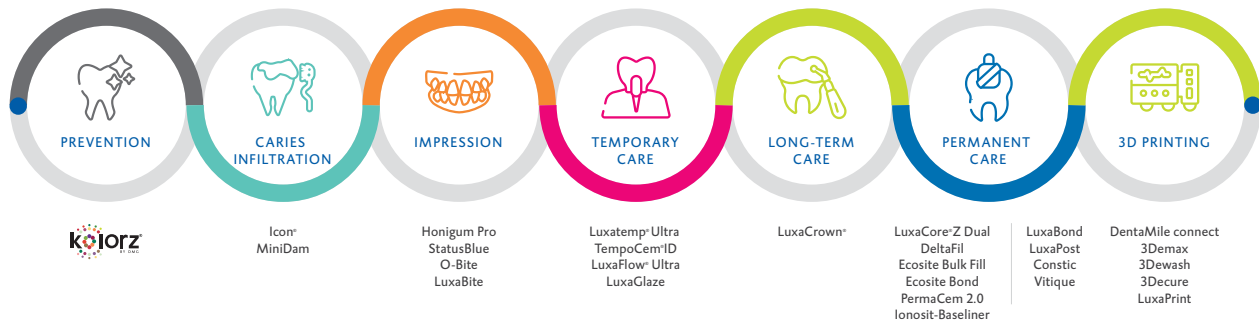
ACCESSORIES

Zekrya Gingival Protector	54
Automix Guns	54
I.B. Brushes	55
Additional Accessories	55
Ordering Information	56

TABLES & CHARTS

Impressions	57
Impressions with Honigum Pro	58-59
Adhesives	60
Restorative Dentistry	61
Temporary and Long-Term Care	62
Luting Cements	63-64
Prevention and Infiltration	65
Automix Guns and Tips	66
Mixing Tips	67

Offering the continuum of preventative to restorative care.



DMG-Connect.com

For education, content, offers and more!



HYGIENE



- ✔ Gluten free
- ✔ Allergy friendly
- ✔ Uses natural sweeteners

➤ Kolorz® ClearShield™ 5% Sodium Fluoride Varnish

Clear, great tasting fluoride varnish

With Xylitol and fluoride, ClearShield smiles look fantastic. The gluten-free varnish goes on clear with no embarrassing discoloration or yellow teeth, and hygienically sealed single-dose packages eliminates cross-contamination, making preparation and clean-up fast and easy.

The proprietary flavorings were developed in consultation with food industry professionals and are guaranteed to taste better than any other brand. Kolorz' yummy Watermelon, Bubblegum, Cookie Dough and Caramel flavors make treatment a picnic for kids, and Mint will especially be appreciated by adults.



FEATURES & BENEFITS

- Contains xylitol and fluoride (22,600 ppm)
- Clump-free consistency
- Gluten, aspartame and saccharin free
- Goes on clear, dries clear
- Five great flavors
- Easy to use
- Single dose units
- Guaranteed to taste better

Request a complimentary sample online at:

www.dmg-connect.com/offers/kolorz



Application of Kolorz ClearShield Fluoride Varnish.

Kolorz® Sixty-Second Fluoride Foam

Protection in a foam

Patients love the smooth foam consistency of Kolorz Sixty-Second Fluoride Foam. The acidulated phosphate formula contains just the right percentage of Fluoride Ion - 1.23% to be exact, and comes in four great-tasting flavors that are guaranteed to taste better than any other brand. Plus, the foams contain non-caloric natural sweeteners and Xylitol.

Kolorz® Sixty-Second Fluoride Gel

Protection in a gel

Kolorz Sixty-Second Fluoride Gel has a thixotropic formula that won't run under bite pressure. Available in three great-tasting flavors, the gels are also aspartame, gluten and saccharin free. With an acidulated phosphate formulation of 1.23% Fluoride Ions, protection is instantaneous, easy and promotes remineralization.

Kolorz® Neutral Fluoride Foam

2% Sodium Fluoride with a neutral pH

Kolorz Neutral Fluoride Foam is easy to apply and forms a protective layer on tooth enamel surfaces, promoting remineralization, and reducing the chances of demineralization.

The neutral pH formula contains 2% Sodium Fluoride (0.9% Fluoride Ion) and has a great Kolorz Triple Mint flavor. Plus, the smooth foam consistency makes fluoride treatments a breeze for patients!



PACKAGED
AS BUY 1,
GET 1 FREE!



PACKAGED
AS BUY 1,
GET 1 FREE!



PACKAGED
AS BUY 1,
GET 1 FREE!

➤ Kolorz® Topical Anesthetic Gel

Maximum strength formulation for fast pain relief

The quick-onset of Kolorz Topical Anesthetic Gel provides fast pain relief for dental procedures with no bitter aftertaste. The 20% maximum strength benzocaine formula provides temporary pain relief during periodontal curettage, local injections, intra-oral scaling, root planing and other procedures. Plus, patients love the great tasting flavors like Triple Mint, Cherry Cheesecake, Cotton Candy, Blue Raspberry, and Piña Colada.

➤ Available in the U.S. only.



➤ Kolorz® Prophylaxis Paste

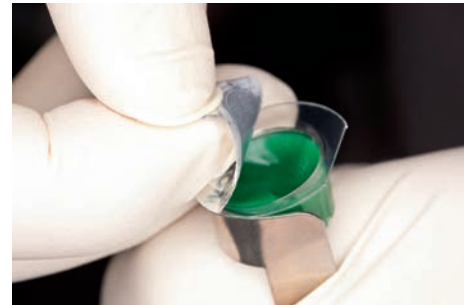
For a perfect cleaning and polishing effect

Splatter-free Kolorz Prophylaxis Paste removes discolorations, plaque, and polishes tooth surfaces for immediate results!

Its four different grits – X-tra coarse (only available in Mint), coarse, medium and fine, conveniently allow you to adjust the degree of abrasion.

Kolorz 1.23% APF fluoride Prophylaxis Paste is gentle and does not cause any unnecessary abrasion of tooth structure or restoration surfaces.

Unlike many other prophylaxis pastes, Kolorz Propylaxis Pastes contain an advanced gluten-free formula and non-caloric natural sweeteners like Xylitol.



PACKAGED
AS BUY 1,
GET 1 FREE!

HYGIENE

Ordering Information

Item #	Product	Contents
Kolorz® ClearShield™		
799501	Kolorz ClearShield Fluoride Varnish - Watermelon 35 pk	35 unit-dose Packages
799503	Kolorz ClearShield Fluoride Varnish - Bubblegum 35 pk	35 unit-dose Packages
799506	Kolorz ClearShield Fluoride Varnish - Mint 35 pk	35 unit-dose Packages
799512	Kolorz ClearShield Fluoride Varnish - Cookie Dough 35 pk	35 unit-dose Packages
799516	Kolorz ClearShield Fluoride Varnish - Caramel 35 pk	35 unit-dose Packages
799502	Kolorz ClearShield Fluoride Varnish - Watermelon 200 pk	200 unit-dose Packages
799504	Kolorz ClearShield Fluoride Varnish - Bubblegum 200 pk	200 unit-dose Packages
799507	Kolorz ClearShield Fluoride Varnish - Mint 200 pk	200 unit-dose Packages
799513	Kolorz ClearShield Fluoride Varnish - Cookie Dough 200 pk	200 unit-dose Packages
799517	Kolorz ClearShield Fluoride Varnish - Caramel 200 pk	200 unit-dose Packages
Kolorz® Sixty-Second Fluoride Foam (U.S. only)		
766201	Kolorz Sixty-Second Fluoride Foam - Triple Mint	4.4oz Can
766202	Kolorz Sixty-Second Fluoride Foam - Cherry Cheesecake	4.4oz Can
766203	Kolorz Sixty-Second Fluoride Foam - Cotton Candy	4.4oz Can
766204	Kolorz Sixty-Second Fluoride Foam - Blue Raspberry	4.4oz Can
Kolorz® Sixty-Second Fluoride Gel (U.S. only)		
777301	Kolorz Sixty-Second Fluoride Gel - Triple Mint	16oz Bottle
777303	Kolorz Sixty-Second Fluoride Gel - Cotton Candy	16oz Bottle
777304	Kolorz Sixty-Second Fluoride Gel - Blue Raspberry	16oz Bottle
Kolorz® Neutral Fluoride Foam (U.S. only)		
766205	Kolorz Neutral Fluoride Foam - Triple Mint	4.4oz Can

Item #	Product	Contents
Kolorz® Topical Anesthetic Gel (U.S. only)		
755101	Kolorz Topical Anesthetic Gel - Triple Mint	1 oz Jar
755102	Kolorz Topical Anesthetic Gel - Cherry Burst	1 oz Jar
755103	Kolorz Topical Anesthetic Gel - Cotton Candy	1 oz Jar
755104	Kolorz Topical Anesthetic Gel - Blue Raspberry	1 oz Jar
755105	Kolorz Topical Anesthetic Gel - Piña Colada	1 oz Jar
Kolorz® Prophylaxis Paste		
788401	Kolorz Prophylaxis Paste - Triple Mint, Fine Grit	200 unit-dose Cups
788402	Kolorz Prophylaxis Paste - Triple Mint, Medium Grit	200 unit-dose Cups
788403	Kolorz Prophylaxis Paste - Triple Mint, Coarse Grit	200 unit-dose Cups
788404	Kolorz Prophylaxis Paste - Triple Mint, X-tra Coarse Grit	200 unit-dose Cups
788406	Kolorz Prophylaxis Paste - Cherry Burst, Medium Grit	200 unit-dose Cups
788407	Kolorz Prophylaxis Paste - Cherry Burst, Coarse Grit	200 unit-dose Cups
788408	Kolorz Prophylaxis Paste - Carnival Pak, Fine Grit	100 unit-dose Cups Cotton Candy, 100 unit-dose Cups Blue Raspberry
788409	Kolorz Prophylaxis Paste - Carnival Pak, Medium Grit	100 unit-dose Cups Cotton Candy, 100 unit-dose Cups Blue Raspberry
788415	Kolorz Prophylaxis Paste - Assorted Cinnamon and Mint, Medium Grit	200 unit-dose Cups
788416	Kolorz Prophylaxis Paste - Assorted Cinnamon and Mint, Coarse Grit	200 unit-dose Cups
788417	Kolorz Prophylaxis Paste - Bubblegum, Fine Grit	200 unit-dose Cups

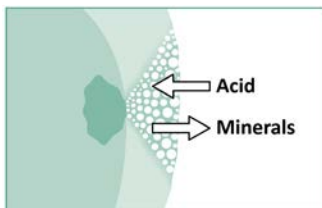
CARIES INFILTRATION



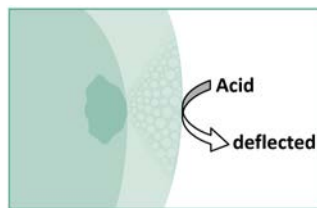
Icon® Caries Infiltrant

The revolutionary treatment for incipient caries and white spots

Caries infiltration is a breakthrough in micro-invasive technology that fills, reinforces and stabilizes demineralized enamel without drilling, anesthesia or sacrificing healthy tooth structure. Ideal for incipient caries that are beyond preventive therapies yet too early for restorative treatment (up to the first third of dentin), Icon puts an end to the old “wait and see” approach.



Cariogenic acids demineralize enamel.



Icon blocks the diffusion paths.

CARIES INDICATIONS

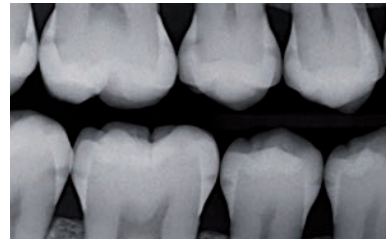
- Mineral loss under a pseudo-intact surface layer
- Demineralization that can affect a pore volume of 30% or more in the lesion body
- Cariogenic acids that diffuse through these pores and dissolve minerals from the enamel



Resin Infiltration is now recognized by insurance with CDT code 2990.

FEATURES & BENEFITS

- Successfully arrest the progression of incipient caries
- Prolong the life expectancy of the tooth
- No unnecessary loss of healthy tooth structure
- Effectively treat hard-to-reach lesions
- Esthetically remove white spots in one visit
- Restore the authentic tooth shade
- Maintain healthy tooth structure
- Treat fluorosis, developmental, orthodontic



Before Icon

After Icon

MiniDam

Gingival protector

- Reliable protection of the proximal region
- Quick, easy and comfortable for patients
- Secure hold without clamps
- Ideal for bleaching, acid etching or Icon resin infiltration
- Latex free



Ordering Information

Item #	Product	Contents
Icon® Caries Infiltrant		
220402	Icon Smooth Surface Mini Kit	2 Patient Packs Including: 1-0.45ml Syringe Icon-Etch, 1-0.45ml Syringe Icon-Dry, 1-0.45ml Icon-Infiltrant, 6 Smooth Surface Tips, 1 Luer-Lock Tip
220403	Icon Smooth Surface Cube	7 Patient Packs Including: 1-0.45ml Syringe Icon-Etch, 1-0.45ml Syringe Icon-Dry, 1-0.45ml Icon-Infiltrant, 6 Smooth Surface Tips, 1 Luer-Lock Tip
220400	Icon Proximal Mini Kit	2 Patient Packs Including: 1-0.30ml Syringe Icon-Etch, 1-0.45ml Syringe Icon-Dry, 1-0.45ml Icon-Infiltrant, 6 Proximal Tips, 4 Dental Wedges
220401	Icon Proximal Cube	7 Patient Packs Including: 1-0.30ml Syringe Icon-Etch, 1-0.45ml Syringe Icon-Dry, 1-0.45ml Icon-Infiltrant, 6 Proximal Tips, 4 Dental Wedges
220385	Icon Etch Refill Kit	3-0.45ml Syringes, 15 Smooth Surface Tips
220381	MiniDam	20 Pieces

IMPRESSION



Honigum & Honigum Pro

Your complete impression material system

Honigum Pro is the only VPS that goes where you want it, stays where you place it and has the unique ability to thin under load. It makes its way into tiny crevices and hard-to-reach areas that other impression materials can miss.

The material's true thixotropic formula won't slump or run, and remains stable where you place it. It exhibits remarkable strength to resist tearing upon removal, preventing the need for retakes.

Plus, our "Snap-Set" technology provides an unbeatable combination of generous working time, even while still in the mouth, and offers a conveniently short intra-oral time.



Gingival formers after the implants have healed into position.



Syringing around the impression posts.



Complete syringing around the impression posts.



Fixation of impression posts in an individual, open impression tray, provides positionally stable fixation.



FEATURES & BENEFITS

- ↗ Dynamic viscosity under pressure
- ↗ Flexible working time
- ↗ Rapid "snap-set" technology
- ↗ Maximum tear strength
- ↗ Extremely hydrophilic
- ↗ Subtle honey aroma
- ↗ Fast-setting options



Honigum Pro Heavy

- Heavy consistency tray material
- Exhibits extreme accuracy
- Extraordinary stability
- Easy removal
- Rigid for locked-in detail

Honigum Pro Light

- Light consistency wash material
- Extraordinary stability
- Improved flowability
- High toughness
- Precise detail

Honigum Pro Putty

- Putty consistency
- Optimal shaping by hand
- Outstanding recovery
- Excellent dimensional stability
- High tear strength

Honigum Pro Mono

- Medium consistency
- Monophase material
- Precise and easy to remove
- Optimal flowability
- High tear strength

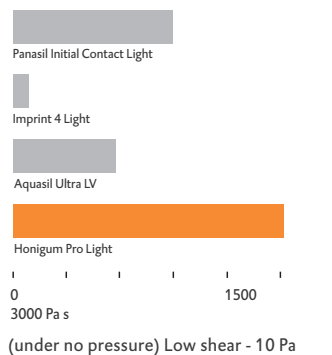
Faster Setting Options

Honigum Pro QuadFast Light & Honigum Pro QuadFast Heavy

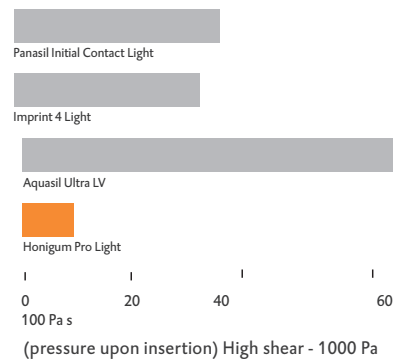
Honigum Classic

Available in Light, Heavy and Monophase viscosities.

Viscosity at rest*



Viscosity under load*



↗ For indications, working and setting times see *Tables & Overview* section

O-Bite

For a simply superior bite registration

O-Bite is the bite registration material with exceptional accuracy, predictability and speed. Its proprietary vinyl polysiloxane formulation offers a Shore A Hardness of 94, for unrivaled stability and resistance to breakage.

Use O-Bite with confidence for all types of bite registrations. Reduce or eliminate chairside occlusal adjustments to restorations with superior accuracy and ensure greater patient comfort. With its exceptional stability, you can even capture full jaw-bow registrations.

Produce the hardest of bite registrations with dimensional stability and the ability to withstand warm weather, storage, shipping, cold disinfection and model mounting, without flexing or distortion.

FEATURES & BENEFITS

- ↗ Superb accuracy
- ↗ Outstanding stability
- ↗ Technique flexibility
- ↗ Hard VPS-based bite registration material
- ↗ Superior break resistance
- ↗ Minimal bite resistance



IMPRESSION



Direct application of O-Bite.



Patient in desired occlusion.



Bite registration before removal.



Easy to cut with a scalpel or a silicone cutter.

↗ For indications, working and setting times see *Tables & Overview* section

LuxaBite

The hardest, quality bite registration

LuxaBite is an innovative rigid bisacryl bite registration material that combines superior handling properties and a firmer setting to yield the most accurate, hard and stable bite registrations on the market (Shore D-69, or Barcol 25 after 1 hr).

FEATURES & BENEFITS

- Hardest bite registration material on the market
- Excellent stability
- Homogenous, bubble-free, no-slump consistency
- No compression on mounting
- Patient-friendly formula: tasteless and odorless
- Easy to trim with a high-speed bur
- Superior accuracy
- Offers minimal resistance to closure of teeth
- Can be directly applied



Its thixotropic material properties prevent flowing into proximal spaces, and a superior final high hardness eliminates compression or flexing when mounted.

Plus, LuxaBite is completely stable when positioned on the model. Dental assistants value the convenient and easy excess removal with a dental bur. After all, the material should be hard, not the work.

➤ For indications, working and setting times see *Tables & Overview* section



StatusBlue

Fast, easy alginate replacement material

StatusBlue is an innovative A-Silicone impression material that's specifically designed as a high-efficiency alternative to traditional alginates. Used for temporaries, model cast dentures, orthodontic models and opposing jaw models, it can be cold disinfected and re-poured as needed for up to two weeks. Plus, our convenient Automix options provides easy mixing and dispensing with no hand mixing, mess or clean-up.

FEATURES & BENEFITS

- Pourable after 10 minutes, repourable
- High dimensional stability
- Long shelf life
- Firm consistency for slump-free tray dispensing
- Sets quickly for greater patient comfort

For indications, working and setting times see *Tables & Overview* section



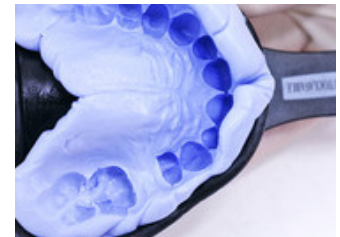
Initial situation.



Application of DMG Tray Adhesive.



Homogeneous and bubble-free StatusBlue application into the Border-Lock tray.



Precise reproduction of the oral situation.

Tray Adhesive

Tray adhesive for all VPS materials

DMG Tray Adhesive for A-Silicone is formulated to offer optimal adhesion between addition-silicone-based impression materials (VPS), and minimally retentive or non retentive metal, plastic or resin trays.



MixStar eMotion

Mixing made easy

The MixStar eMotion is an efficient, dynamic mixing machine that provides clean, easy and hands-free mixing and dispensing of pre-filled 380ml cartridges. It includes two built-in times indicating working and setting times for up to six impression materials.

FEATURES & BENEFITS

- Fully automatic, easy-to-use, hands-free operation
- Compatible with a wide range of materials
- 3 speeds
- Efficiently mixes for less waste
- 2 timers: working and setting times
- Easily programmable for different materials
- Consistent, homogeneous, bubble-free material

ASK ABOUT HOW YOU CAN EARN A FREE MIXSTAR EMOTION MACHINE WITH THE DMG POWER POINTS PROGRAM!



IMPRESSION

Ordering Information



IMPRESSION

Item #	Product	Contents
Honigum Pro		
989537	Honigum Pro Heavy Mixstar	1-380ml Cartridge, 10 MixStar Mixing Tips
989638	Honigum Pro QuadFast Heavy Mixstar	1-380ml Cartridge, 10 MixStar Mixing Tips
989766	Honigum Pro Heavy	4-50ml Cartridges, 8 Automix Tips
989838	Honigum Pro QuadFast Heavy	4-50ml Cartridges, 8 Automix Tips
989568	Honigum Pro Mono Mixstar	1-380ml Cartridge, 10 MixStar Mixing Tips
989830	Honigum Pro Mono	4-50ml Cartridges, 8 Automix and Intra-Oral Tips
989539	Honigum Pro Light	4-25ml Cartridges, 10 Automix and Intra-Oral Tips
989831	Honigum Pro Light	2-50ml Cartridges, 10 Automix and Intra-Oral Tips
989832	Honigum Pro QuadFast Light	2-50ml Cartridges, 10 Automix and Intra-Oral Tips
989639	Honigum Pro QuadFast Light	4-25ml Cartridges, 10 Automix and Intra-Oral Tips
989374	Honigum Pro Putty MixStar	1-380ml Cartridge, 10 MixStar Mixing Tips
Honigum		
999537	Honigum MixStar Heavy	1-380ml Cartridge, 10 MixStar Mixing Tips
999766	Honigum Heavy	4-50ml Cartridges, 12 Automix Tips
999568	Honigum MixStar Mono	1-380ml Cartridge, 10 MixStar Mixing Tips
999830	Honigum Mono	4-50ml Cartridges, 12 Automix and Intra-Oral Tips
999539	Honigum Light	4-25ml Cartridges, 16 Automix and Intra-Oral Tips
999638	Honigum MixStar QuadFast Heavy	1-380ml Cartridge, 10 MixStar Mixing Tips
999838	Honigum QuadFast Heavy	4-50ml Cartridges, 12 Automix Tips
999839	Honigum Mono QuadFast	4-50ml Cartridges, 8 Automix and Intra-Oral Tips
999639	Honigum QuadFast Light	4-25ml Cartridges, 16 Automix and Intra-Oral Tips
999831	Honigum Light	2-50ml Cartridges, 10 Automix and Intra-Oral Tips
999832	Honigum QuadFast Light	2-50ml Cartridges, 10 Automix and Intra-Oral Tips
999900	Honigum Rigid X-tra Fast	4-50ml Cartridges, 8 Automix Tips

Item #	Product	Contents
Honigum Accessories		
999507	Type 50 1:1 Automix Gun	1 Gun
110253	Type 25 1:1 Automix Gun	1 Gun
999400	Automix Tips Green 1:1	Bag of 50 Tips (suitable for Honigum Pro Mono, Honigum Pro Heavy/QuadFast Heavy, Honigum Mono, Honigum Heavy/QuadFast Heavy)
999490	Intra-Oral Tips	Bag of 50 Tips (suitable for Honigum Pro Mono, Honigum Pro Heavy/QuadFast Heavy, Honigum Mono, Honigum Heavy/QuadFast Heavy)
999567	MixStar Tips White 5:1	Box of 50 Tips (suitable for Honigum Heavy/QuadFast Heavy, Honigum Mono, Honigum Pro Heavy/QuadFast Heavy, Honigum Pro Mono)
993334	Mixstar Tips Blue 5:1	Box of 50 Tips (suitable for Honigum Pro Putty)
110424	Automix Yellow 1:1/Intra-Oral Tips Yellow	Bag of 35 Tips Each (suitable for Honigum Light/QuadFast Light, Honigum Pro Light/QuadFast Light)
O-Bite		
999765	O-Bite	4-50ml Cartridges, 15 Automix Tips
999202	Automix Tips Pink 1:1	Bag of 50 Tips (suitable for O-Bite)
999507	Type 50 1:1 Automix Gun	1 Gun
LuxaBite		
110560	LuxaBite Refill Kit	1-50ml Cartridge, 15 Automix Tips
110609	Automix Tips Yellow 10:1	Bag of 25 Tips (suitable for LuxaBite)
110411	Type 50 10:1/4:1 Automix Gun	1 Gun
StatusBlue		
999693	StatusBlue MixStar	1-380ml Cartridge, 10 MixStar Mixing Tips
999826	StatusBlue Automix Canister	7 + 1 FREE 50ml Cartridges, 16 Automix Tips
999797	Automix Tips Pink 4:1	Bag of 25 Tips (suitable for StatusBlue)
110411	Type 50 10:1/4:1 Automix Gun	1 Gun
Tray Adhesive		
999394	Tray Adhesive	1-10ml Bottle
MixStar eMotion		
999482	MixStar eMotion Machine	1 Mixing Machine Unit

PROVISIONAL CARE

For decades, DMG has provided the market-leading temporary crown and bridge material for superior provisionals that protect the tooth structure and look and feel like natural teeth. Luxatemp's superior chemistry and convenient dispensing system quickly made it the best selling provisional material and benchmark in North America.

The complete family of provisional materials meet the needs of dentists and patients alike. Today's dentists rely on the advanced Luxatemp system to create durable provisionals that mirror the natural, beautiful look of the final restoration.



PROVISIONAL CARE

Luxatemp® Plus

Proven successful material for temporary crowns and bridges

Luxatemp Plus creates extremely accurate provisionals that are abrasion resistant and easily removable. Plus, excellent marginal adaptation and negligible linear shrinkage during polymerization eliminates the need to re-marginate.



Initial situation.



After preparation.



Temporary in place.



Final restoration.

Luxatemp® Ultra

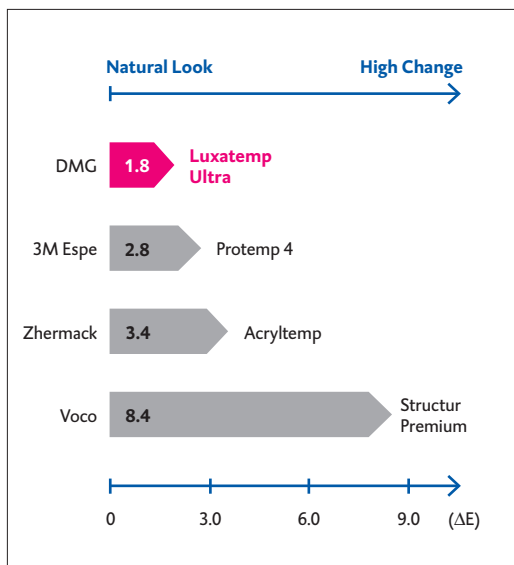
The market leader in provisionals

With DMG proprietary nanotechnology, Luxatemp Ultra continues its reign of provisional excellence. The material's unbeatable flexural strength, break resistance and improved initial hardness makes temporaries more stable than ever. It also offers long-term color stability and reaches its final hardness quicker; an added bonus for any dental practice.



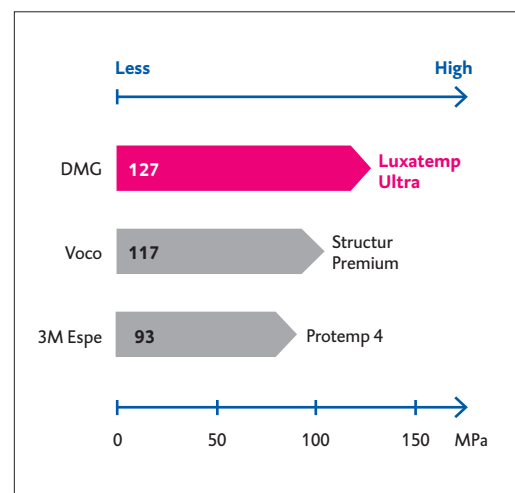
Dr. Jon Marashi, DDS, San Clemente, CA

COLOR CHANGE



Luxatemp Ultra demonstrates the least discoloration in the control group, thus proving itself to offer impressive color stability.²

FLEXURAL STRENGTH (RATED #1)



Measurements carried out at Erlangen University Clinic showed outstanding flexural strength values for Luxatemp Ultra.¹

Luxatemp® Solar

Ideal choice for long-span temporary bridges

Specifically developed for multi-part restorations, Luxatemp Solar is a high-quality bisacryl provisional crown and bridge material dentists love, in an improved, light-cure formula. Its elastic phase was prolonged, simplifying the removal of the temporary, for undercuts that won't tear.

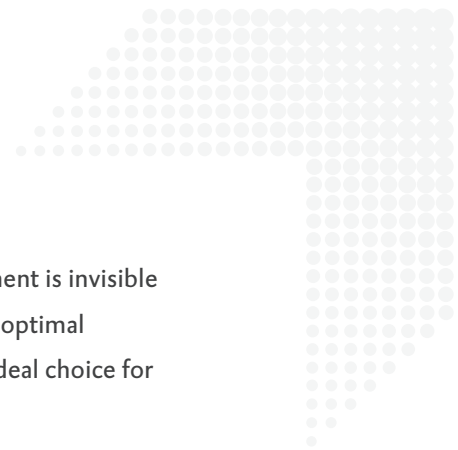
Luxatemp® Fluorescence

Naturally esthetic

With its superior esthetics and unique handling, award-winning Luxatemp Fluorescence fits perfectly into the provisional family. Clinicians can confidently choose the best temporary material to fit their clinical needs.

¹ Measurements: Friedrich Alexander University of Erlangen-Nuremberg, Dr. Ing. Ulrich Lohbauer (associate professor), Fatigue behavior of three temporary crown and bridge materials, 2010. ² Internal DMG measurements. Initial values, immersion in water for 28 days at 60 °C.

TempoCem® ID



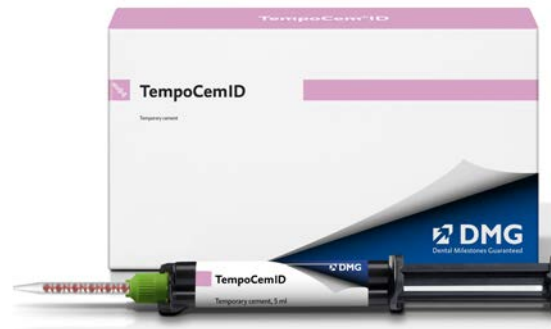
Invisible to everyone but you

TempoCem ID delivers standout performance by blending in. This esthetic, temporary cement is invisible when you want it to be, yet detectable when you need it to be. Innovatively formulated for optimal transparency, TempoCem ID will never impact the shade of your provisional, making it an ideal choice for both posterior and anterior restorations alike.

Plus, unlike other esthetic clear temporary cements, TempoCem ID is readily detectable (even below the gum line) and can often be easily removed in one piece.

FEATURES & BENEFITS

- Invisible under restorations yet detectable for excess removal
- Beautiful esthetics thanks to optimal transparency
- Easy, one-piece removal of excess
- Optimal adhesion with easy removability
- Eugenol-free formulation
- Excellent ease of use, no sticking to instruments
- Flows and mixes easily for ideal handling
- Perfect for long-term temporaries



PROVISIONAL CARE

TempoCem®

TempoCem is our original temporary luting cement with eugenol that can be used for the temporary cementation of crowns, bridges, inlays and onlays.

TempoCem® NE

This ideal zinc oxide, non-eugenol cement is indicated for long-term temporaries when a eugenol temporary cement is not recommended. The material flows and mixes easily for smooth handling, has optimal adhesion and doesn't stick to instruments.

LuxaGlaze®

The perfect finishing touch for your provisionals

Originally designed as the perfect finishing touch for temporaries fabricated with Luxatemp, LuxaGlaze is a one-bottle, light-cured varnish for glazing the surfaces of provisional crowns and bridges. It light cures in as little as 10 seconds for a quick, easy and esthetically superior alternative to mechanical polishing.

FEATURES & BENEFITS

- ↗ High-gloss shine without polishing
- ↗ Exhibits lifelike appearance
- ↗ Enhances the esthetics of temporary restorations
- ↗ Minimizes the accumulation of plaque and debris
- ↗ Greater protection and improved stain resistance
- ↗ Light cured
- ↗ Quick and easy application



LuxaFlow® Ultra

For lifelike repairs

LuxaFlow Ultra is the perfect add-on resin, specifically designed for excellent compatibility with Luxatemp and other bisacryl materials. It is formulated with fluorescence and is highly polishable for highly esthetic results.



LuxaFlow®

For add-ons and repairs

LuxaFlow is ideal for blocking out undercuts, fillings, cavity Classes III, IV, V and as a solution for enamel defects.



PROVISIONAL CARE

Ordering Information

Item #	Product	Contents
Luxatemp® Automix Plus		
110400	Luxatemp Automix Plus Introductory Kit - A2	1-76gm Cartridge, 15 Automix Tips, 1 Type 50 Automix Gun
110401	Luxatemp Automix Plus Refill Kit - A1	1-76gm Cartridge, 15 Automix Tips
110402	Luxatemp Automix Plus Refill Kit - A2	1-76gm Cartridge, 15 Automix Tips
110403	Luxatemp Automix Plus Refill Kit - A3.5	1-76gm Cartridge, 15 Automix Tips
110404	Luxatemp Automix Plus Refill Kit - B1	1-76gm Cartridge, 15 Automix Tips
110368	Luxatemp Automix Plus Refill Kit - BL	1-76gm Cartridge, 15 Automix Tips
110406	Luxatemp Automix Plus Bulk Pack - A2	5-76gm Cartridges, 75 Automix Tips
Luxatemp® Ultra		
110906	Luxatemp Ultra Automix Kit - A1	1-76gm Cartridge, 15 Automix Tips
110907	Luxatemp Ultra Automix Kit - A2	1-76gm Cartridge, 15 Automix Tips
110908	Luxatemp Ultra Automix Kit - A3	1-76gm Cartridge, 15 Automix Tips
110909	Luxatemp Ultra Automix Kit - A3.5	1-76gm Cartridge, 15 Automix Tips
110910	Luxatemp Ultra Automix Kit - B1	1-76gm Cartridge, 15 Automix Tips
110911	Luxatemp Ultra Automix Kit - BL	1-76gm Cartridge, 15 Automix Tips
110901	Luxatemp Ultra Smartmix - A2	1-15gm Syringe, 10 Smartmix Tips
110904	Luxatemp Ultra Smartmix - B1	1-15gm Syringe, 10 Smartmix Tips
110905	Luxatemp Ultra Smartmix - BL	1-15gm Syringe, 10 Smartmix Tips
Luxatemp® Solar		
110360	Luxatemp Solar Refill Kit - A2	1-76gm Cartridge, 15 Automix Tips
Luxatemp® Fluorescence		
110585	Luxatemp Fluorescence - A1	1-76gm Cartridge, 15 Automix Tips
110586	Luxatemp Fluorescence - A2	1-76gm Cartridge, 15 Automix Tips
110710	Luxatemp Fluorescence - A3	1-76gm Cartridge, 15 Automix Tips

110587	Luxatemp Fluorescence - A3.5	1-76gm Cartridge, 15 Automix Tips
110588	Luxatemp Fluorescence - B1	1-76gm Cartridge, 15 Automix Tips
110589	Luxatemp Fluorescence - BL	1-76gm Cartridge, 15 Automix Tips
110719	Luxatemp Fluorescence Smartmix - A2	1-15gm Syringe, 10 Smartmix Tips
110722	Luxatemp Fluorescence Smartmix - B1	1-15gm Syringe, 10 Smartmix Tips
110723	Luxatemp Fluorescence Smartmix - BL	1-15gm Syringe, 10 Smartmix Tips
Luxatemp® Accessories		
110411	Type 50 10:1/4:1 Automix Gun	1 Gun
110351	Automix Tips Blue 10:1	Bag of 25 Tips (suitable for Luxatemp Fluorescence)
110991	Smartmix Tips Blue-Green	Bag of 25 Tips (suitable for Luxatemp Fluorescence)
TempoCem® ID, TempoCem® and TempoCem® NE		
213200	TempoCem ID Smartmix	1-5ml Syringe, 10 Smartmix Tips
110300	TempoCem Automix Refill Kit	1-25ml Cartridge, 40 Automix Tips
110302	TempoCem NE Automix Refill Kit	1-25ml Cartridge, 40 Automix Tips
212104	TempoCem NE Smartmix	2-5ml Syringes, 10 Smartmix Tips
212129	TempoCem Smartmix	2-5ml Syringes, 10 Smartmix Tips
212040	Smartmix Tips	Bag of 50 Tips (suitable for TempoCem, TempoCem NE)
110266	Automix Tips Blue 1:1	Bag of 50 Tips (suitable for TempoCem, TempoCem NE)
110728	Smartmix Tips Orange-Green	Bag of 25 Tips (suitable for TempoCem ID)
110253	Type 25 1:1 Automix Gun	1 Gun
LuxaGlaze®		
212075	LuxaGlaze Kit	1-5ml Dropper Bottle, 1 Mixing Palette, 25 Soft Disposable Applicator Brushes
LuxaFlow® Ultra and LuxaFlow®		
224000	LuxaFlow Ultra Introductory Kit	1-1.5gm Syringe each of A1, A2, A3.5, B1, 20 Syringe Tips
224001	LuxaFlow Ultra Refill Kit - A1	2-1.5gm Syringes, 10 Syringe Tips
224002	LuxaFlow Ultra Refill Kit - A2	2-1.5gm Syringes, 10 Syringe Tips
224003	LuxaFlow Ultra Refill Kit - A3	2-1.5gm Syringes, 10 Syringe Tips
224004	LuxaFlow Ultra Refill Kit - A3.5	2-1.5gm Syringes, 10 Syringe Tips
224005	LuxaFlow Ultra Refill Kit - B1	2-1.5gm Syringes, 10 Syringe Tips
211751	LuxaFlow Introductory Kit	1-1.5gm Syringe each of A1, A2, A3.5, B1, 20 Syringe Tips
211753	LuxaFlow Refill Kit - A1	2-1.5gm Syringes, 10 Syringe Tips
211754	LuxaFlow Refill Kit - A2	2-1.5gm Syringes, 10 Syringe Tips
211755	LuxaFlow Refill Kit - A3.5	2-1.5gm Syringes, 10 Syringe Tips
211756	LuxaFlow Refill Kit - B1	2-1.5gm Syringes, 10 Syringe Tips
211759	Syringe Tips	Bag of 20 Tips (suitable for LuxaFlow, LuxaFlow Ultra)

LONG-TERM CARE



LuxaCrown®

The perfect fit between temporary and permanent restorations

Revolutionary LuxaCrown creates long-lasting crowns quickly and economically - directly chairside. The easy-to-make, high-performance composite crown and bridge material is highly esthetic and shows remarkable longevity. It is ideal for crown and bridge work and implant procedures where phasing of treatment is recommended.

LuxaCrown offers the confidence and natural beauty at a less-costly option for your patients while delivering the high-strength, quality and reliability you've come to expect from DMG.

FEATURES & BENEFITS

- Quick and easy technique
- Optimal mechanical properties
- Excellent fracture toughness
- Excellent polishability
- Simple processing
- Long lasting with excellent results
- Time and cost savings
- Reliable durability
- Versatility in applications and uses

PERFECT FOR

- Challenging restorative situations
- Implant cases
- Cosmetic restorative cases
- Emergency cases
- Phased treatments
- Bruxism
- Pediatric cases
- Healthy aging adult patients
- Palliative patients
- Affordable restorative care

Available in
the U.S. only



Initial situation.

The wax-up/mock-up
simulates the restoration.

Prepared tooth.



Applying LuxaCrown into
the impression.

LuxaCrown crown.

Final result.

Ordering Information



Item #	Product	Contents
LuxaCrown®		
120970	LuxaCrown - A1	1-50ml Cartridge, 15 Automix Tips
120971	LuxaCrown - A2	1-50ml Cartridge, 15 Automix Tips
120972	LuxaCrown - A3	1-50ml Cartridge, 15 Automix Tips
120973	LuxaCrown - A3.5	1-50ml Cartridge, 15 Automix Tips
120974	LuxaCrown - B1	1-50ml Cartridge, 15 Automix Tips
110411	Type 50 10:1/4:1 Automix Gun	1 Gun
110351	Automix Tips Blue 10:1	Bag of 25 Tips (suitable for LuxaCrown)

Available ADA codes: 02394 & 02710

PERMANENT CARE



LuxaCore® Z Dual

Cuts like natural dentin for precise preparations, every time

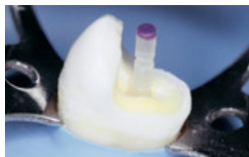
LuxaCore Z Dual is the award-winning core material with added Zirconia that cuts identical to dentin to ensure a controlled, precise preparation of the margin. It transitions smoothly between dentin and allows for groove-free preparations without any undercuts. Plus, the material works perfectly for your post cementing needs in a single step.

FEATURES & BENEFITS

- ↗ Cuts remarkably like dentin
- ↗ Exceptional compressive strength for enhanced stability
- ↗ Patented nanotechnology prevents particle agglomeration
- ↗ Smoother material, enhanced flow and handling
- ↗ Film thickness of precision cement
- ↗ Perfect properties, even when used as a post cement
- ↗ More stable, firmer, easier to form



PERMANENT CARE



Seating the LuxaPost with LuxaCore Z Dual as the luting cement.



Core build-up using LuxaCore Z Dual.



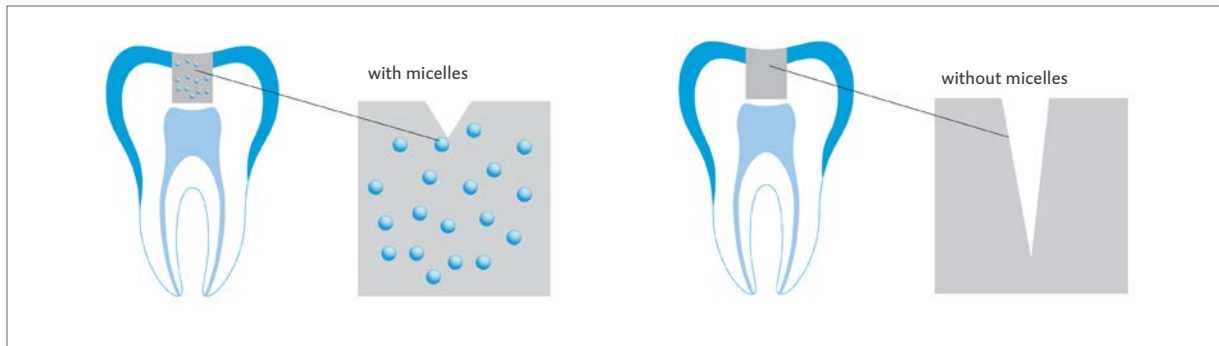
Easy and precise preparation of LuxaCore Z Dual thanks to dentin-like cuttability.



Monoblock.

Stability from the inside

DeltaFil is a glass ionomer restorative material based on an innovative technology – elastomeric micelle technology (EMT). Elastomeric micelles are dispersed within the material, increasing fracture toughness and thereby strengthening it, resulting in a greater resistance of the restorations without effects on biocompatibility and fluoride release.

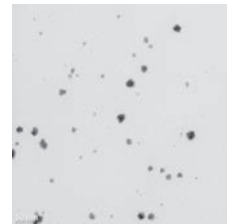


Elastomeric micelles minimize the development of cracks in the filling material

FEATURES & BENEFITS

- Simple to mold
- Does not stick to the instruments
- Perfect adaption to the cavity wall
- Optimized consistency for all indications
- Convenient processing time
- Excellent setting behavior
- Suitable for use with metal matrices
- Self-adhesive
- Excellent biocompatibility

TRANSMISSION ELECTRON MICROSCOPY



Transmission electron microscopy (TEM) image of a DeltaFil micelle suspension. Staining to increase contrast.

Source: Copyright Fraunhofer IWMS, Feb. 2021, data not published. Patent submission 2019 (WO2019/185175 A1)



COMING
IN 2022!

PermaCem 2.0

The strongest bond to Zirconia

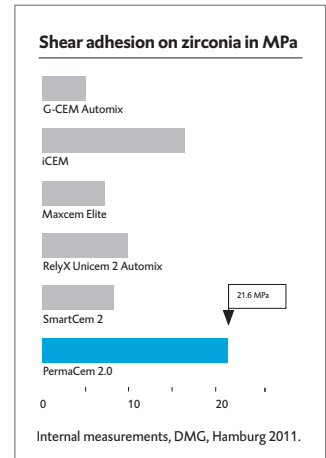
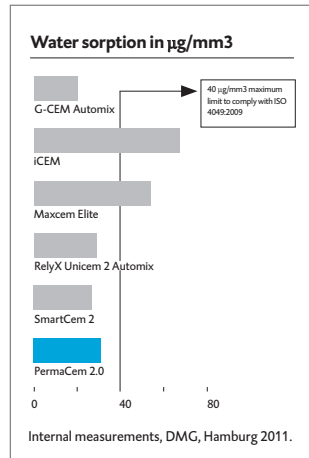
PermaCem 2.0 is proven to provide one of the strongest bonds to Zirconia restorations compared to other leading self-adhesive permanent cements. With a recently developed adhesive monomer formula, its dual curing properties provide an exceptional bond across all substrates.

The optimized viscosity and no-drip formulation makes clean up and removing excess quick and easy, resulting in less stress and chair time. Plus, as a single-step cement, you have the added benefit of not requiring an etching step.



FEATURES & BENEFITS

- Strong self-adhesive bond to Zirconia
- No etching step needed
- Lower water sorption rate
- Drip resistant and easy cleanup
- Superior compression strength
- Superior adhesive strength
- Outstanding bond across all substrates thanks to MDP technology



A ceramic inlay will correct the amalgam restoration in tooth #14.



After placement of a matrix PermaCem 2.0 is placed.



The pre-treated inlay is inserted and light cured.



Excess cement is easily removed.



The restoration upon completion.

PermaCem Dual

PermaCem Dual is a zero-expansion, dual-cure, universal, compomer-based permanent cement for use with all final restorations such as precious, semi-precious and non-precious metal crowns (including ceramic crowns).



PERMANENT CARE

LuxaPost

The DMG quality root post

LuxaPost is a glass-fiber, reinforced composite post with a similar flexural modulus to dentin. Its properties are based on natural tooth structure and designed with a tapered form to conform easily to the post preparation.

LuxaPost's high flexural modulus corresponds closely to that of natural dentin, which minimizes peak stresses in the post-cement-root system and lowers the risk of root fractures. The retention grooves improve mechanical retention, rendering good stability, and the high degree of transparency prevents the post from shining through the tooth for a highly esthetic restoration.

Plus, to meet the needs of dental practices, LuxaPost is radiopaque and pre-silanized. With its user-friendly, color-coded system and only one drill needed per size, handling is simplified, no pre-shaping and additional silane are needed, and treatment time is reduced.

FEATURES & BENEFITS

- High flexural strength and good stability
- Transparent for highly esthetic results
- Only one drill per size: no pre-shaping drill necessary
- Retention grooves improve mechanical retention
- User-friendly, color-coded system
- Optimized radiopacity
- Pre-silanized



Preparing the root canal.



LuxaPost try-in.



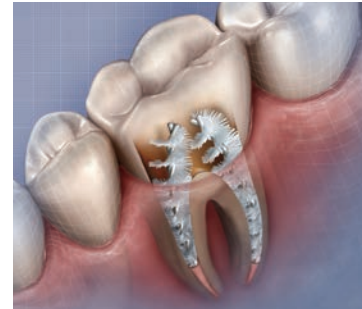
Shortening of the LuxaPost.

Spirapost

Self-adapting dental post with a custom fit

The patented Spirapost with poly fiber strands, naturally flexes to conform to the shape of the canal, for a custom fit for all root canal configurations.

Thanks to its unique design, Spirapost adapts to irregularities of the canal to the removal of tooth material, is radiopaque, highly esthetic and is not technique sensitive.



FEATURES & BENEFITS

- Custom fit for all applications
- Conforms to curvature of canal
- Absorbs and distributes external forces to help minimize failure risk
- Easy to use and cost-effective
- Multiple posts may be used in molars with converging canals
- Easy to remove
- 100% bio-compatible materials

➤ Available in the U.S. only

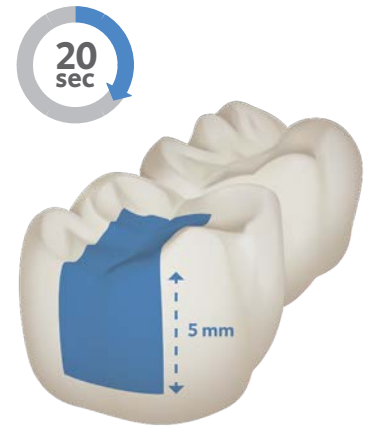


Ecosite Bulk Fill

Where speed and beauty become one

Designed to deliver superior esthetics and perfect adaptation with one, quick 20-second light cure, Ecosite Bulk Fill is a new generation of bulk fill composites for all your posterior restorations. Fill up to 5mm with no capping layer needed!

Its ability to flow smoothly under pressure ensures high packability without sticking to instruments. The bulk fill material reliably cures in a single-layer application to the depth of 5mm while providing unmatched handling, polishability and superb adaptation. It also provides protection by releasing fluoride.



FEATURES & BENEFITS

- Fill up to 5mm—no capping layer needed
- One quick 20-second light cure
- Excellent adaptation, packability and handling
- High polishability for superior esthetics
- Low shrinkage stress
- Does not stick to instruments
- Releases fluoride
- Functional and practical shade system
- The Universal shade's chameleon effect matches every common VITA color.

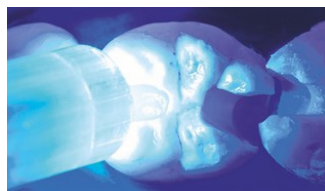


INDICATIONS

- Restorations in the posterior region (Classes I and II, including replacement of individual cusps)
- Restorations of Class V (cervical caries, root erosion, wedge-shaped defects)
- Core build ups
- Restorations of deciduous teeth



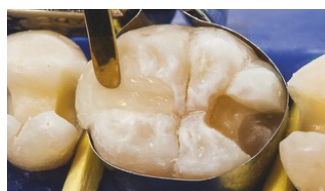
Application of the adhesive.



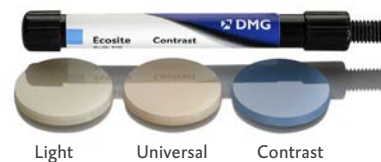
Curing of the adhesive.



Ease of sculpting of the occlusal relief due to optimal consistency.



Quick and excellent polishability.



DMG Composite Gun

Direct application for composite tips

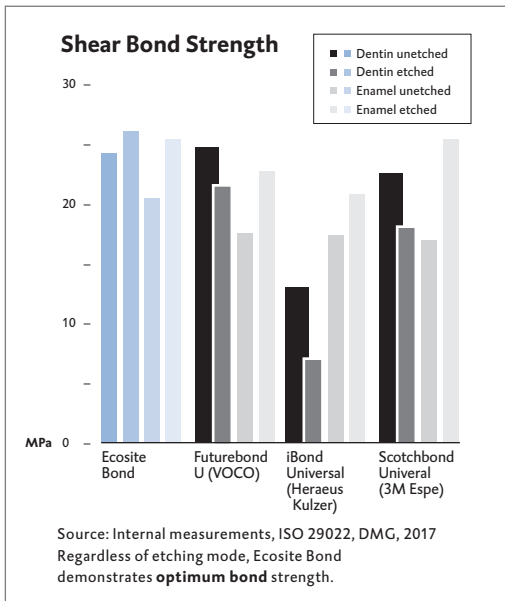
The DMG composite Gun is designed for the placement of dental materials precisely and accurately into the oral cavity. It allows for the fast and easy placement of composites, with a comfortable handle for easy maneuvering.



Ecosite Bond

Freedom with your etching mode

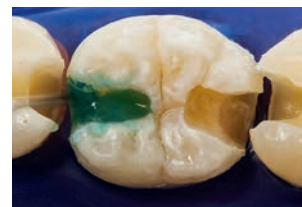
Ecosite Bond is a light-curing, 1-bottle universal bonding agent with optimal bond strength. Ideal for direct restorations of light-cured composite materials, it demonstrates optimum bond strength, regardless of your etching mode.



Quick and easy use in the self-etch mode.



Straightforward use in selective etching technique.



Easy to use in a total-etch technique.

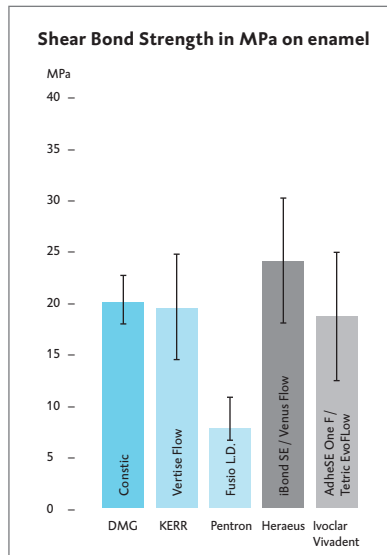
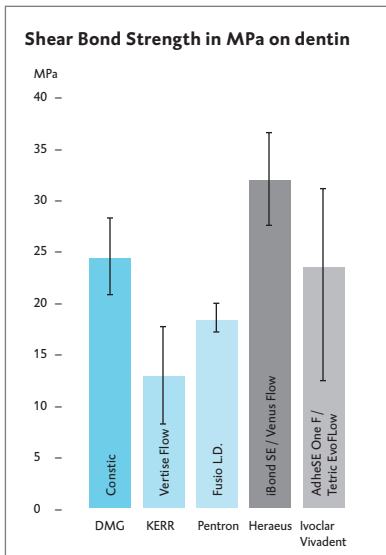
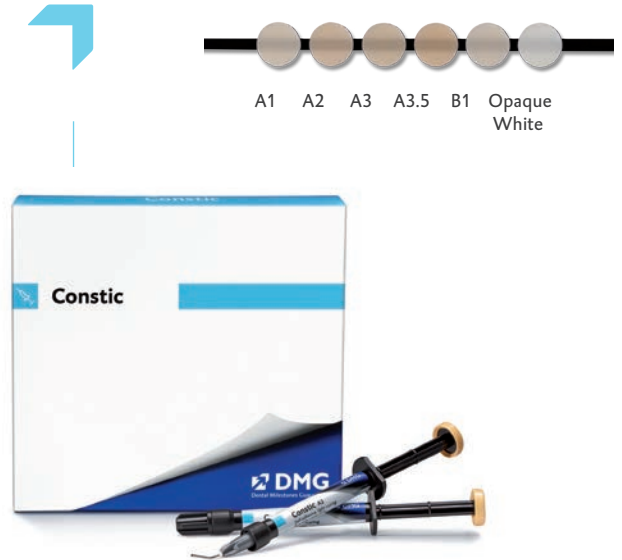
Constic

Etching, bonding and filling in one step

3-in-1, flowable, self-etching and self-adhesive, Constic combines an etching gel, bonding agent and flowable composite in one. Now you can enjoy a faster, easier and safer procedure, from Class I restorations and under-fillings to pit and fissure sealing.

FEATURES & BENEFITS

- Self-etching and self-adhesive
- Faster, easier and more efficient treatment process
- Radiopacity and tooth-like fluorescence
- Prevents postoperative sensitivities
- Minimizes potential sources of mistakes
- High bond strength
- Low elastic modulus



*Source: Munoz-Viveros CA (2012); Data on file, DMG, Hamburg, Germany



Constic is applied to the cavities/fissures using the Luer-Lock tip.



Constic is massaged into the entire tooth surface for 25 sec. using the included brush.

Unlike other self-adhesive composites, Constic has robust bond strength on enamel and dentin. It's the one composite for all your procedures.

Ionosit Baseline

Create gap-free and stress-free restorations

Ionosit Baseline prevents micro-gaps, the leading cause of micro-leakage, before they happen. It's a fact of life that composites undergo polymerization shrinkage. We rely on adhesives to maintain a strong gap-free bond between composite and dentin, but that doesn't always happen. Ionosit Baseline employs patented controlled expansion technology to reduce the post-polymerization stress which leads to leakage, post-op sensitivity and recurrent decay.

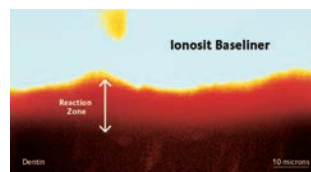
Ionosit Baseline is a base material for composite and amalgam restorations that can be used to block out undercuts in inlay/onlay restorations.

FEATURES & BENEFITS

- Micro-expansion agent
- Bonds to dentin and composites
- Protects the pulp
- Releases fluoride
- Bacteriostatic
- Light cured for plenty of working time
- Radiopaque
- No complicated hand-mixing
- Prevents post operative sensitivity



Ionosit Baseline seals the dentinal tubules and thus prevents postoperative sensitivity.



A visible gap-free reaction zone occurs between Ionosit Baseline and dentin.

TECHNICAL DATA

Working time [s]	90
Light-curing [s]	20
Thickness of layers [mm]	1
Radiopacity [% Al]	160
Compressive strength [MPa]	130
Flexural strength [MPa]	> 60
Flexural modulus [MPa]	6,500
Diam. Tensile strength [MPa]	34



Vitique

The complete veneer cementation system

Vitique is a premium resin cement developed specially to enhance the production of perfect veneers. It offers several innovations unmatched by other veneer cements, such as superior color stability, for long lasting and beautiful veneers.



FEATURES & BENEFITS

- Outstanding shade reproduction and selection
- Exact shade match between try-in and cement
- Easy removal of excess
- High color stability
- Practical veneer tip

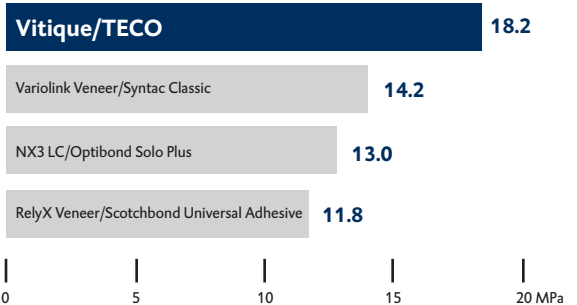


Practical veneer tip



The TECO Total-Etch bonding system

The bonding system contained in the accessory kit, TECO Total-Etch is a single-bottle system that provides excellent bond strength, helping to ensure reliable veneer cementation.



Vitique Silane

Improved adhesion for resin materials, luting cements and glass fiber posts

Vitique Silane is a two-component system consisting of an adhesive silane and an activator.

The components are mixed in at a 1:1 ratio directly before application, ensuring a fresh mix and resulting in a better bond. Perfectly suited for use with Vitique, it is ideal for bonding siliceous ceramic substrates, fiber resin endodontic composite posts and adhesives, such as luting composites.



Anterior/Posterior Hybrid Composite

Anterior/Posterior Hybrid Composite creates anterior and posterior restorations that are long lasting, abrasion resistant and esthetically pleasing. It combines the durability necessary for posterior composite restorations, with the polishability required for anterior esthetic results. The high hardness prevents wearing down of restoration and the light-curing delivers unlimited working time.



40% Etch Gel

An effective etchant for tooth enamel

This 40% phosphoric acid gel for etching tooth enamel has great flow properties and a viscosity that prevents flow of acid into soft tissue, adjacent teeth and/or cementum and dentin. Its thixotropic properties won't run, rinses off easily and cleanly, and is easily distinguishable from tooth structure.

The material is easily dispensed with disposable, angled Luer-Lock micro tips, allowing for precise and controlled placement while preventing cross contamination.



Currently available in the U.S. only

LuxaBond Total Etch

Bond with total confidence

LuxaBond Total Etch is a dual-curing adhesive system that provides users with more reliable total bond strength through specifically shaped Endobrushes (for easier application in the root canal). The multi-bottle adhesive system is also suitable for the bonding of posts, cores, crowns, bridges, inlays and onlays.

The pre-bond activator reacts with the adhesives in the tooth leading to deeper penetration with flexible working time and a stronger bond. Self-curing does more than just allow it to be used in areas that light does not reach.

Use Luxabond Total Etch easily with LuxaCore Z Dual for core build-ups or the adhesive cementation of crowns and bridges with Vitique or PermaCem.

FEATURES & BENEFITS

- Dual-curing adhesive system; self-curing: hardens even without light
- Better adhesion
- Compatible with self-curing and dual-curing composite resin materials
- Pre-Bond facilitates quicker curing in the dentin for superior retention
- Indicated for bonding of posts, cores, crowns, bridges, inlays and onlays
- Easy root canal application with special Endobrushes
- Does not contain acetone



Conditioning of the cavity and canal (enamel: 20 to 60 seconds, dentin: max. 15 s).



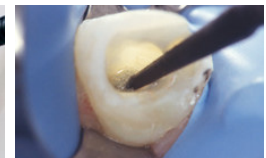
Cleaning and drying.



Applying the Pre-Bond with a specially shaped endobrush.



Mixing Bond A and Bond B.



Bonding the cavity with the mixture of components Bond A and Bond B.

Alloys

The alloy type you want, and the consistent mix and optimum handling you need



Premium Dispersed Phase Amalgam Alloy:

Fast and Regular Set

Ensure good marginal integrity and eliminate open contacts while providing longer lasting, corrosion resistant restorations.

Type-T Spherical Amalgam Alloy

The Type-T Spherical Amalgam Alloy is the strongest type of alloy made that resists fracture and ditching. Its fast setting allows for immediate packing and carving.

Twisting and pinching is eliminated with the self-activating capsule, and the one-step trituration eliminates the need for an activator tool. Convenient, color-coded capsules are easy to differentiate between types and spills.

Variable Speed Amalgamator

Your amalgamator of choice

- ↗ Built-in timer to mix and blend the pillow (5-30 secs.)
- ↗ Reinforced fiberglass arm design
- ↗ Vibration absorbers
- ↗ Reduced motor noise
- ↗ High-impact case
- ↗ Maintenance free
- ↗ Powerful high-torque motor
- ↗ 3 speed settings: high (4,800 rpm), medium (4,200 rpm) and low (3,600 rpm)



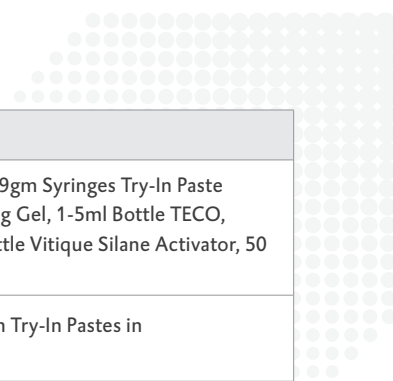
PERMANENT CARE

Ordering Information



Item #	Product	Contents
LuxaCore® Z Dual		
213330	LuxaCore Z Dual Automix Refill Kit - A3	1-48gm Cartridge, 30 Automix Tips, 30 Intra-Oral Tips
213331	LuxaCore Z Dual Automix Refill Kit - Blue	1-48gm Cartridge, 30 Automix Tips, 30 Intra-Oral Tips
213332	LuxaCore Z Dual Automix Refill Kit - Light Opaque	1-48gm Cartridge, 30 Automix Tips, 30 Intra-Oral Tips
213334	LuxaCore Z Dual Smartmix - A3	2-9gm Syringes, 10 Smartmix Tips, 10 Intra-Oral Tips
213335	LuxaCore Z Dual Smartmix - Blue	2-9gm Syringes, 10 Smartmix Tips, 10 Intra-Oral Tips
213336	LuxaCore Z Dual Smartmix - Light Opaque	2-9gm Syringes, 10 Smartmix Tips, 10 Intra-Oral Tips
110253	Type 25 1:1 Automix Gun	1 Gun
110424	Automix Yellow 1:1/Intra-Oral Tips Yellow	Bag of 35 Tips Each (suitable for LuxaCore Z Dual)
212042	Smartmix/Intra-Oral Tips	Bag of 50 Tips Each (suitable for LuxaCore Z Dual)
DeltaFil		
540000	DeltaFil A1	50-370mg powder, 75mg liquid
540001	DeltaFil A2	50-370mg powder, 75mg liquid
540002	DeltaFil A3	50-370mg powder, 75mg liquid
540003	DeltaFil A3.5	50-370mg powder, 75mg liquid
540004	DeltaFil A4	50-370mg powder, 75mg liquid
540020	DeltaFil Conditioner	1-7.7ml Bottle
509344	Applicap Dispenser	1 Applicap Dispense
PermaCem 2.0 and PermaCem Dual		
213366	PermaCem 2.0 - A2	1-9gm Syringe, 15 Standard Mixing Tips, 5 Endo Tips
213367	PermaCem 2.0 - A3	1-9gm Syringe, 15 Standard Mixing Tips, 5 Endo Tips
213368	PermaCem 2.0 - Transparent	1-9gm Syringe, 15 Standard Mixing Tips, 5 Endo Tips
110525	PermaCem Dual Automix Refill Kit - Transparent	1-52gm Cartridge, 40 Automix Tips
213373	Smartmix Tips Endo M	Bag of 20 Tips (suitable for PermaCem 2.0)
212040	Smartmix Tips	Bag of 50 Tips (suitable for PermaCem Dual, PermaCem 2.0)
110266	Automix Tips Blue 1:1	Bag of 50 Tips (suitable for PermaCem Dual, PermaCem 2.0)
110253	Type 25 1:1 Automix Gun	1 Gun

LuxaPost		
110780	LuxaPost Introductory Kit	5-1.25mm Posts, 5-1.375mm Posts, 5-1.5mm Posts, 1-1.25mm Drill, 1-1.375mm Drill, 1-1.5mm Drill, 30 Silicone Stops, 1 Measuring Card
110781	LuxaPost Refill Kit - 1.25mm	5-1.25mm Posts
110782	LuxaPost Refill Kit - 1.375mm	5-1.375mm Posts
110783	LuxaPost Refill Kit - 1.5mm	5-1.5mm Posts
110734	LuxaPost Drill Refill Kit - 1.25mm	1-1.25mm Drill
110735	LuxaPost Drill Refill Kit - 1.375mm	1-1.375mm Drill
110736	LuxaPost Drill Refill Kit - 1.5mm	1-1.5mm Drill
SpiraPost (U.S. Only)		
888100	Spirapost Introductory Package	10 Tapered Posts, 10 Parallel Posts, 1 #4 Gates Glidden, 1 #5 Gates Glidden, 1 Spirapost Ruler
888101	Spirapost Parallel Refill Package	10 Parallel Posts, 1 #5 Gates Glidden
888102	Spirapost Tapered Refill Package	10 Tapered Posts, 1 #4 Gates Glidden
888103	Spirapost Ruler	1 Ruler
Ecosite Bulk Fill and Ecosite Bond		
220752	Ecosite Bulk Fill Syringe Refill - Light	1-4gm Syringe
220753	Ecosite Bulk Fill Syringe Refill - Universal	1-4gm Syringe
220754	Ecosite Bulk Fill Syringe Refill - Contrast	1-4gm Syringe
220755	Ecosite Bulk Fill Safetip Refill - Light	16-0.25gm Safetips
220756	Ecosite Bulk Fill Safetip Refill - Universal	16-0.25gm Safetips
220757	Ecosite Bulk Fill Safetip Refill - Contrast	16-0.25gm Safetips
220600	DMG Composite Gun	1 Gun
220758	Ecosite Bond	1-5ml Bottle
Constic		
220700	Constic - A1	2-2gm Syringes, 1 Brush Holder, 20 Clip-On Brushes, 20 Luer-Lock Silver Tips
220701	Constic - A2	2-2gm Syringes, 1 Brush Holder, 20 Clip-On Brushes, 20 Luer-Lock Silver Tips
220702	Constic - A3	2-2gm Syringes, 1 Brush Holder, 20 Clip-On Brushes, 20 Luer-Lock Silver Tips
220703	Constic - A3.5	2-2gm Syringes, 1 Brush Holder, 20 Clip-On Brushes, 20 Luer-Lock Silver Tips
220704	Constic - B1	2-2gm Syringes, 1 Brush Holder, 20 Clip-On Brushes, 20 Luer-Lock Silver Tips
220705	Constic - Opaque White	2-2gm Syringes, 1 Brush Holder, 20 Clip-On Brushes, 20 Luer-Lock Silver Tips
220712	Constic Accessory Pack	20 Clip-on Brushes, 20 Luer-Lock Silver Tips
Ionosit Baseline		
210911	Ionosit Baseline Office Pack	2 Operator Trays. Each Contains: 5-0.3gm Syringes, 1 Applicator Pad
223002	Ionosit Baseline Syringe Pack	2-1.5gm Syringes, 20 Luer-Lock Tips



Vitique		
213080	Vitique Veneer System	3-6gm Syringes Esthetic Resin Cement and 3-3.9gm Syringes Try-In Paste in shades A2.5, B1 and TR, 1-2ml Syringe Etching Gel, 1-5ml Bottle TECO, 1-3ml bottle Vitique Silane Adhesive, 1-3ml Bottle Vitique Silane Activator, 50 Veneer Tips, Accessories
213081	Vitique Cementation Kit	3-6gm Syringes Esthetic Resin Cement, 3-3.9gm Try-In Pastes in shades A2.5, B1 and TR, 50 Veneer Tips
213082	Vitique Veneer Accessory Kit	1-2ml Syringe Etching Gel, 1-3ml Bottle Vitique Silane Activator, 1-5ml Bottle TECO, 1-3ml Bottle Vitique Silane Adhesive, Accessories
213038	Vitique Base Refill Syringe - A1	1-6gm Syringe, 10 Veneer Tips
213039	Vitique Base Refill Syringe - A2.5	1-6gm Syringe, 10 Veneer Tips
213040	Vitique Base Refill Syringe - A4	1-6gm Syringe, 10 Veneer Tips
213041	Vitique Base Refill Syringe - B1	1-6gm Syringe, 10 Veneer Tips
213042	Vitique Base Refill Syringe - Bleach Light	1-6gm Syringe, 10 Veneer Tips
213043	Vitique Base Refill Syringe - Transparent	1-6gm Syringe, 10 Veneer Tips
213044	Vitique Base Refill Syringe - White	1-6gm Syringe, 10 Veneer Tips
213045	Vitique Base Refill Syringe - Pink	1-6gm Syringe, 10 Veneer Tips
213048	Vitique Try-In Refill Syringe - A1	1-3.9gm Syringe, 10 Veneer Tips
213049	Vitique Try-In Refill Syringe - A2.5	1-3.9gm Syringe, 10 Veneer Tips
213050	Vitique Try-In Refill Syringe - A4	1-3.9gm Syringe, 10 Veneer Tips
213051	Vitique Try-In Refill Syringe - B1	1-3.9gm Syringe, 10 Veneer Tips
213052	Vitique Try-In Refill Syringe - Bleach Light	1-3.9gm Syringe, 10 Veneer Tips
213053	Vitique Try-In Refill Syringe - Transparent	1-3.9gm Syringe, 10 Veneer Tips
213054	Vitique Try-In Refill Syringe - White	1-3.9gm Syringe, 10 Veneer Tips
213055	Vitique Try-In Refill Syringe - Pink	1-3.9gm Syringe, 10 Veneer Tips
213057	Veneer Tips	Bag of 100 Tips (suitable for Vitique)
Vitique Silane		
213118	Vitique Silane	1-3ml Vitique Silane Adhesive, 1-3ml Vitique Silane Activator, 50 Single-Use Brushes, 1 Brush Holder
Anterior/Posterior Hybrid Composite		
61181	Refill Kit - Universal	1-3gm Syringe
40% Etchant Gel (U.S. Only)		
61901	40% Etch Gel Kit	4-1.2ml Syringes, 20 Micro Etch Tips
61903	Etch Gel Micro Tips	Bag of 20 Tips
LuxaBond Total Etch		
212384	LuxaBond Total Etch Introductory Kit	1-5ml Bottle Pre-Bond, 1-5ml Bottle Bond A, 1-5ml Bottle Bond B, 1-2ml Syringe Etch Gel Medium Viscosity, 25 Red Endobrushes, 25 Black Endobrushes, 3 Luer-Lock Tips, 1 Mixing Palette
212385	LuxaBond Endo Brush Refill	25 Red Endobrushes

Premium Dispersed Phase Alloy Fast Set		
61009	50 Capsules - Single Spill	Cap: Green, Body: White
61013	50 Capsules - Double Spill	Cap: Dark Blue, Body: White
61017	50 Capsules - Triple Spill	Cap: Yellow, Body: White
61021	500 Capsules - Single Spill	Cap: Green, Body: White
61025	500 Capsules - Double Spill	Cap: Dark Blue, Body: White
61029	500 Capsules - Triple Spill	Cap: Yellow, Body: White
Premium Dispersed Phase Alloy Regular Set		
61008	50 Capsules - Single Spill	Cap: Gray, Body: Green
61012	50 Capsules - Double Spill	Cap: Gray, Body: Dark Blue
61016	50 Capsules - Triple Spill	Cap: Gray, Body: Yellow
61020	500 Capsules - Single Spill	Cap: Gray, Body: Green
61024	500 Capsules - Double Spill	Cap: Gray, Body: Dark Blue
61028	500 Capsules - Triple Spill	Cap: Gray, Body: Yellow
Type - T High Copper Spherical Alloy		
61039	50 Capsules - Single Spill	Cap: Aqua, Body: Royal Blue
61040	50 Capsules - Double Spill	Cap: Aqua, Body: Grey
61041	50 Capsules - Triple Spill	Cap: Aqua, Body: White
61035	500 Capsules - Single Spill	Cap: Aqua, Body: Royal Blue
61036	500 Capsules - Double Spill	Cap: Aqua, Body: Grey
61037	500 Capsules - Triple Spill	Cap: Aqua, Body: White
Amalgamator		
61033	Variable Speed Amalgamator	9-1/2" (L) x 7-1/2" (W) x 4" (H)

DIGITAL TECHNOLOGY



DMG DentaMile 3D Printing Solution

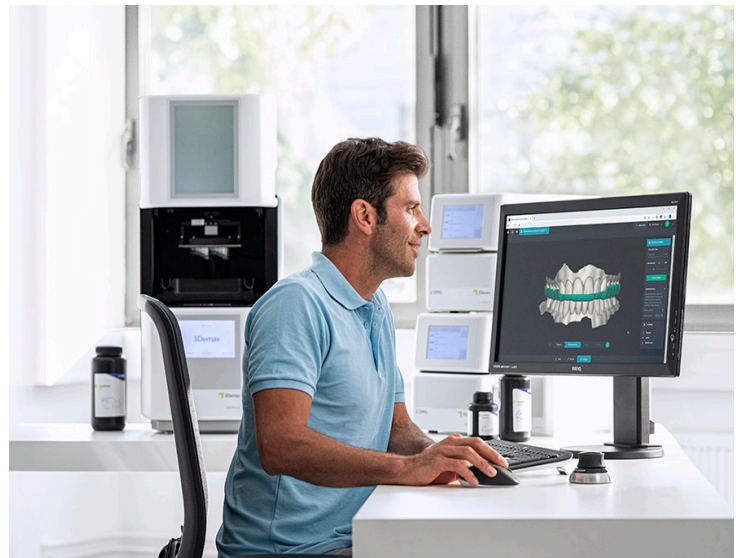
3D printing, your way

With the integrated approach of the DMG DentaMile 3D Printing Solution, our hardware, software and materials interconnect perfectly, **making processing and 3D printing easier, faster and more intuitive than ever.**

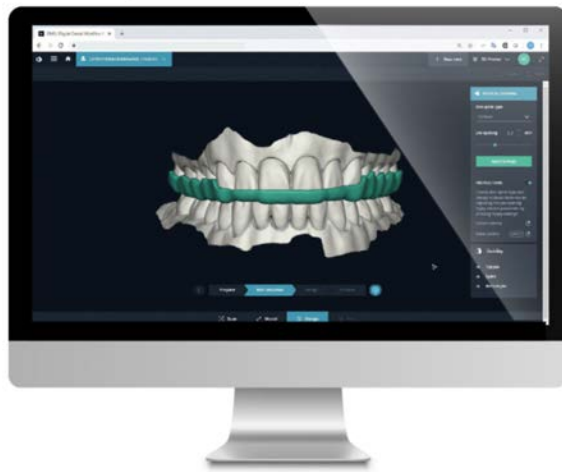
Whether you're considering designing, printing, scanning, or networking with a dentist or lab, **DMG DentaMile** lets you choose your way to 3D printing.

Our comprehensive line of hardware, software and resin materials provide:

- Our complete, validated solution
- Fast print speeds
- Full resin library
- Cloud-based software
- Post-processing units with preset programs
- Easy and user-friendly system
- Validated, on-demand fabrication
- Intuitive user interface
- Network and delegate with others
- Send and edit STL files easily
- Complete data security



“The 3Demax printer is extremely fast, versatile, and accurate. The “Force Feedback” technology delivers on the printing speed without compromising accuracy. The complete solution facilitates our digital production with its ease of use and the integrated and validated workflow. The small footprint and ability to stack devices adds to its versatility and convenience. - Edmonds Dental Prosthetics”



DentaMile connect

Say goodbye to a multitude of individual digital solutions. With the integrated digital workflow approach of DentaMile connect, software, hardware and materials interconnect perfectly, making processing and 3D fabrication easier, faster and safer than ever.

Validated & secure

Proprietary DMG design software ensures a secure and validated medical device production workflow with maximum data security. Errors are minimized and new applications are accessible without any added technical effort. No special system requirements apply.

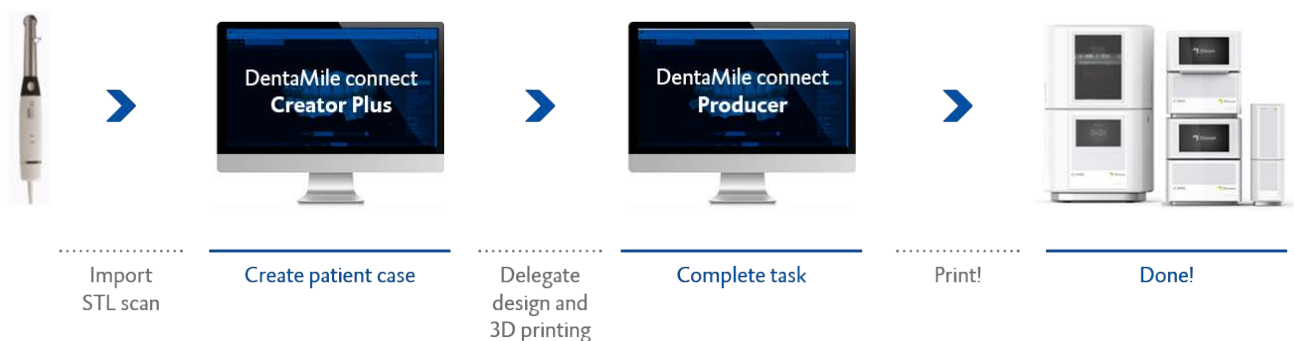
Cloud-based & versatile

DentaMile connect can be used with any operating system, and getting started is easy: all you need is an up-to-date computer/laptop and internet connection.

FEATURES & BENEFITS

- Cloud-based
- No software installation needed
- Instant usability (minimal training required)
- Intuitive user interface
- Simple import and editing of STL files
- Integrated slicing and nesting without system technology change
- Simplified work processes increase efficiency
- Validated, on-demand medical device fabrication
- Case delegation: Easily send STL scans to users
- Four convenient license options: Creator, Creator Plus, Designer and Producer
- Easily meet MDR standards
- Reproduce printed devices anytime

Example of workflow direct to producer



3Demax

Maximum reliability, minimal footprint

The 3Demax is a compact, high-precision, high-speed 3D printer that can be used for a wide range of applications using digital light processing (DLP) technology.

FEATURES & BENEFITS

- High-speed precision processing
- Easy and user-friendly system
- Software supported validated workflow
- A wide range of 3D dental applications
- Accepts all standard STL files
- RFID for automated material identification

TECHNICAL DATA

Size (width/depth/height)	335 x 349 x 541 mm
Build area	130 x 75 x 90 mm
Max. workpiece height	90 mm
Native pixel resolution	+ / - 34 µm
Connections	WLAN, TCP/IP, USB
Weight	approx. 33 kg

The patented “Force Feedback” technology accelerates printing by up to 50%. Using a highly sensitive load cell, each layer process is carefully controlled during printing, minimizing the risk of misprints.

3Dewash & 3Decure

3Dewash

The 3Dewash is a fully integrated unit that is designed for the washing of 3D printed devices using a DLP process. The preset programs systematically wash the remaining non-polymerized resin from the dental application.

TECHNICAL DATA

Size (width/depth/height)	230 x 450 x 270 mm
Volume	130 x 75 x 60 mm
Working time	4-8 minutes, depending on material
Cleaning agent	isopropanol or methyl alcohol, depending on material
Connections	WLAN/LAN

3Decure

The 3Decure is a fully integrated unit that is used for the curing of 3D resins with 360° illumination. The preset programs lock in the device's printed mechanical properties ensuring proper curing according to individual resin specifications.

TECHNICAL DATA

Size (width/depth/height)	230 x 380 x 270 mm
Volume	130 x 75 x 60 mm
Working time	dependent on material
Connections	WLAN/LAN, USB



LuxaPrint

LuxaPrint materials are high-quality, light-cured resins for use with digital light processing printers that work at a wavelength of 385nm. Each resin combines fast printing with outstanding accuracy for all your 3D printing needs.

COLORS

LuxaPrint	Colors
LuxaPrint Ortho Plus	Transparent
LuxaPrint Ortho Flex	Transparent
LuxaPrint Ortho	Transparent
LuxaPrint Model	Beige/Grey
LuxaPrint Gingiva	Pink
LuxaPrint Tray	Turquoise
LuxaPrint Cast	Dark Red



LuxaPrint Tray

A Class I medical device indicated for the fabrication of 3D printed custom impression trays.

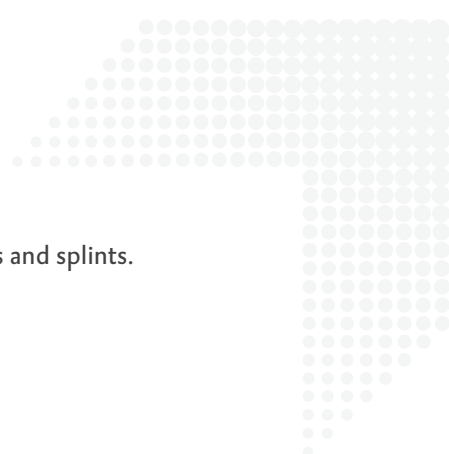
- Quick and easy to print
- Extremely stable for distortion-free impressions
- Exact fit



LuxaPrint Model

Indicated for the fabrication of highly precise and esthetically demanding 3D printed models and is suitable for the production of thermoformed splints.

- Fine, smooth surface structure for detailed models
- Dimensionally stable
- Highly precise for esthetically demanding models



LuxaPrint Ortho

Indicated for the fabrication of highly precise surgical guides and splints.

- ↗ Highly precise for an exact fit
- ↗ Autoclavable
- ↗ 99% transparency



LuxaPrint OrthoFlex

An easy to clean, biocompatible material indicated for the fabrication of flexible soft splints such as bleaching trays and indirect bonding trays.

- ↗ Highly tear resistant
- ↗ Optimal elasticity
- ↗ Near natural transparency



LuxaPrint Ortho Plus

Indicated for the manufacturing of orthodontic and dental appliances such as mouthguards, nightguards, splints and tooth positioners.

- ↗ Transparent
- ↗ Exact fit
- ↗ Not brittle



LuxaPrint Gingiva

Indicated for the precise replication of gingival masks to help simulate the periodontal status for dental laboratory or master models.

- ↗ Highly elastic and tear resistant
- ↗ Dimensionally stable
- ↗ Minimal shrinkage
- ↗ Natural looking



LuxaPrint Cast

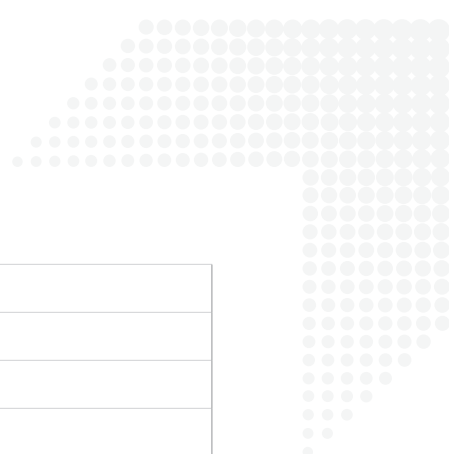
Indicated for the fabrication of residue-free burn-out molds (e.g. model and denture framework castings, crowns and bridges).

- ↗ Fine surface structure
- ↗ Dimensionally stable
- ↗ Easy to cast (no cracks)

DIGITAL TECHNOLOGY

Ordering Information

Item #	Product	Contents
Digital Technology - Software, Hardware and Resins		
170904	DentaMile connect Creator	1 Creator License
170905	DentaMile connect Creator Plus	1 Creator Plus License
170906	DentaMile connect Designer	1 Designer License
170907	DentaMile connect Producer	1 Producer License
171355	DMG 3Ddemax (accessories included)	1 3D Digital Printer with Force Feedback Technology, 1 Build Plate, 1 Resin Tank, 1 Resin Tank Cover, 1 Netfabb Slicing Software, 1 USB Thumb Drive, 1 Spatula, 1 Silicon Scraper, 1 UV-Safety Glasses, 1 Tool Set, 1 Box of Gloves, 2 Power Cords (Type F & Type B), 1 ACCS-Calibration Sensor and Sensor Holder, 1 Positioning Aid for ACCS-Calibration Sensor, 1 Positioning Aid for ACCS-Sensor
171317	DMG 3Ddecure	1 3D Printing Curing Unit, 1 Power Supply, 2 Power Cords (Type F & Type B)
171316	DMG 3Ddewash	1 3D Printing Washing Unit, 1 Power Supply, 2 Power Cords (Type F & Type B)
171264	LuxaPrint Model	1-200gm Bottle, Beige (385/405nm)
171294	LuxaPrint Model	1-200gm Bottle, Grey (385/405nm)
171200	LuxaPrint Model	1-500gm Bottle, Beige (385/405nm)
171292	LuxaPrint Model	1-500gm Bottle, Grey (385/405nm)
171201	LuxaPrint Model	1-1,000gm Bottle, Beige (385/405nm)
171293	LuxaPrint Model	1-1,000gm Bottle, Grey (385/405nm)
171266	LuxaPrint Tray	1-200gm Bottle, Turquoise (385/405nm)
171204	LuxaPrint Tray	1-500gm Bottle, Turquoise (385/405nm)
171205	LuxaPrint Tray	1-1,000gm Bottle, Turquoise (385/405nm)
171262	LuxaPrint Cast	1-200gm Bottle, Dark Red (385/405nm)
171202	LuxaPrint Cast	1-500gm Bottle, Dark Red (385/405nm)
171203	LuxaPrint Cast	1-1,000gm Bottle, Dark Red (385/405nm)
171256	LuxaPrint Ortho	1-200gm Bottle, Transparent (385nm)
171206	LuxaPrint Ortho	1-500gm Bottle, Transparent (385nm)
171207	LuxaPrint Ortho	1-1,000gm Bottle, Transparent (385nm)



171278	LuxaPrint Gingiva	1-200gm Bottle, Pink (385nm)
171240	LuxaPrint Gingiva	1-500gm Bottle, Pink (385nm)
171241	LuxaPrint Gingiva	1-1000gm Bottle, Pink (385nm)
171273	LuxaPrint Ortho Flex	1-200gm Bottle, Transparent (385nm)
171250	LuxaPrint Ortho Flex	1-500gm Bottle, Transparent (385nm)
171252	LuxaPrint Ortho Flex	1-1,000gm Bottle, Transparent (385nm)
171259	LuxaPrint Ortho Plus	1-200gm Bottle, Transparent (385nm)
171210	LuxaPrint Ortho Plus	1-500gm Bottle, Transparent (385nm)
171211	LuxaPrint Ortho Plus	1-1,000gm Bottle, Transparent (385nm)
Digital Technology - Accessories		
170319	DMG 3Demax Resin Reservoir	1 Resin Reservoir
170320	DMG 3Demax Resin Reservoir Cover	1 Resin Reservoir Cover
170321	DMG 3Demax Resin Reservoir Storage Cabinet	1 3Demax Resin Reservoir Storage Cabinet

ACCESSORIES

Zekrya Gingival Protector

Superior gingival protection

- ↗ Autoclavable for infection control
- ↗ Swivel joint allows an easy adjustment of the arcs to any desired position
- ↗ Flexible arc of the protector adapts to fit all tooth sizes
- ↗ Retracts soft tissue while protecting gingiva during rotary instrumentation and preparation
- ↗ Two sizes of replaceable stainless steel arc protector tips to achieve gingival fit



Automix Guns

Reliable, easy-to-use delivery system

- ↗ Homogeneous, bubble-free mixing
- ↗ Trouble-free dispensing
- ↗ Compatible with all commercially available 25ml and 50ml cartridges
- ↗ Available for mixing ratio 1:1, 10:1 and 4:1 Automix Guns
- ↗ Safe and clean application with easy handling
- ↗ Autoclavable



I.B. Brushes

Flexible brushes for a wide range of applications

- ↗ Allows access to any part of the mouth
- ↗ Multiple bends for mesial access
- ↗ No cross-contamination
- ↗ Provides non-slip use with dental gloves
- ↗ Disposable resin-applicator brushes
- ↗ Fine, standard and assorted brushes



↗ Available in the U.S. only

Additional Accessories

A variety of complimentary accessories

- ↗ Disposable brush tips (Available in the U.S. only)
- ↗ Brush handles (Available in the U.S. only)
- ↗ Placement tools
- ↗ Mixing pads
- ↗ Mixing wells
- ↗ Placement spatulas



ACCESSORIES

Ordering Information

Item #	Product	Contents
Zekrya Gingival Protector		
61096	Zekrya Kit	1 Swivel Handle, 10 Small Arcs, 10 Large Arcs
61097	Small Arcs	Bag of 10 Arcs
61098	Large Arcs	Bag of 10 Arcs
I.B. Brushes (U.S. Only)		
61910	Fine	Box of 144 Brushes
61911	Standard	Box of 144 Brushes
61912	Assorted	Box of 144 Brushes (72 Fine, 72 Standard)
Additional Accessories		
61102	Disposable Brush Tips (U.S. Only)	Package of 100 Tips
61103	Brush Handles (U.S. Only)	Package of 2 Handles
61104	Placement Tools	Package of 2 Tools
61105	Mixing Pads	Package of 4 Pads
61106	Mixing Wells	Package of 10 Wells
61107	Placement Straws	Package of 100 Straws
61108	Spatulas	Package of 50 Spatulas
Automix Guns		
110253	Type 25 1:1 Automix Gun	1 Gun
999507	Type 50 1:1 Automix Gun	1 Gun
110411	Type 50 10:1/4:1 Automix Gun	1 Gun

TABLES & CHARTS



Impressions: When to use which material?



















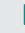

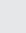

	Honigum Pro Light	Honigum Pro Mono	Honigum Pro Heavy	Honigum Pro Putty	Honigum Light	Honigum Mono	Honigum Heavy	StatusBlue
Crown and bridge impressions	■	■	■	■	■	■	■	
Inlay and onlay impressions	■	■	■	■	■	■	■	
Implant impressions			■				■	
Fixation impressions			■				■	
Functional impressions		■				■		
Pressure-spot indication		■				■		
Situation impression								■
Impressions for the fabrication of temporaries								■
Impressions for the fabrication of vacuum-formed templates								■
Opposing-jaw models								■
Fabrication of models								■

Impressions with Honigum Pro

		Honigum Pro Light	Honigum Pro Mono	Honigum Pro Heavy	Honigum Pro Putty
Viscosity		Low viscosity	Medium viscosity	High viscosity	High viscosity
Setting behavior	Normal-curing	■	■	■	■
	Fast-curing	■	■	■	
Technique	Monophase		■		
	Double-mixing		■	■	■
	Correction			■	■
Syringe material		■			
Insertion resistance	Low	■			
	Medium		■	■	■

Impressions with Honigum Pro

TECHNICAL DATA

Honigum Pro	Light		Mono				Heavy				Putty
											
	Fast		Fast		Fast		Fast		Fast		
ml	50/25	50/25	380	380	50	50	380	380	50	50	380
Mixing time [min]											
Intra-oral working time [min]	≤ 1:00	≤ 0:30	≤ 1:00	≤ 0:30	≤ 1:00	≤ 0:30					
Max. extra-oral working time [min]	≤ 2:45	≤ 1:30	≤ 2:45	≤ 1:30	≤ 2:45	≤ 1:30	≤ 2:45	≤ 1:30	≤ 2:45	≤ 1:30	≤ 1:45
Setting time in the mouth [min]	≥ 3:15	≥ 2:00	≥ 3:15	≥ 2:00	≥ 3:15	≥ 2:00	≥ 3:15	≥ 2:00	≥ 3:15	≥ 2:00	≥ 3:15
Dimensional change after 24 h [%]	≤ 0.35	≤ 0.35	≤ 0.4	≤ 0.4	≤ 0.4	≤ 0.4	≤ 0.4	≤ 0.4	≤ 0.4	≤ 0.4	≤ 0.5
Compression set [%]	≤ 0.25	≤ 0.25	≤ 0.35	≤ 0.35	≤ 0.35	≤ 0.35	≤ 0.5	≤ 0.5	≤ 0.5	≤ 0.5	≤ 0.6
Shore-A-hardness	≈ 48	≈ 48	≈ 56	≈ 56	≈ 56	≈ 56	≈ 68	≈ 68	≈ 68	≈ 68	≈ 66
Strain in compression [%]	≈ 4.0	≈ 4.0	≈ 2.8	≈ 2.8	≈ 2.8	≈ 2.8	≈ 1.8	≈ 1.8	≈ 2.0	≈ 2.0	≈ 2.0
Color											

Adhesives

When to use which material?

		TECO*	LuxaBond Total Etch	Ecosite Bond
Technique	Total-Etch	■	■	■
	Self-Etch			■
For the adhesive cementation of	Light-curing restorative materials	■		■
	Self and dual-curing restorative materials		■	
Curing mode of the adhesive	Light-cure	■		■
	Dual-cure		■	
Usage in combination with DMG products	Ionosit-Baseliner	■		
	Vitique	■		■
	PermaCem Dual		■	
	LuxaCore Z Dual		■	
	Ecosite Bulk Fill			■
Direct Restoration	Core build-up		■	■
	Direct fillings	■	■	■
	Luting of veneers	■		
	Root canal		■	
	Luting of indirect restorations	■	■	

* TECO is only available as part of the Vitique system.



Restorative Dentistry

When to use which material?

	Constic	Ecosite Bulk Fill	Ionosit Baseline	LuxaCore Z Dual
Class I	■	■		
Class II		■		
Class III	■			
Class V	■	■		
Deciduous teeth	■	■		
Fissure sealant	■			
Liner	■		■	
Root caries	■			
Tunnel preparation	■			
Minimally invasive	■			
Restoration of temporaries	■			
Core build-up		■		■
Type of material	Composite	Nano Hybrid-Composite	Compomer	Composite
Number of shades	6	3	1	3
Shade	A1, A2, A3, A3.5, B1, Opaque-White	Light, Universal, Contrast	B2	Light Opaque, A3, Blue
Curing time	20 s	20 s	20 s	40 s
Light-cure	■	■	■	■
Self-cure				■
Radiopaque	■		■	■
Application	2g Luer-Lock-syringe	4g syringe, 0.25g Safetip	0.33g Saferinge, 1.5 g Luer-Lock-syringe	9g Smart-mix-syringe, 48g Automix-cartridge

Temporary and Long-Term Care

When to use which material?

	Luxatemp Ultra	Luxatemp Fluorescence	Luxatemp Plus	Luxatemp Solar	LuxaFlow Ultra	LuxaCrown
Temporary crowns and bridges	■	■	■	■		■
Temporary inlays and onlays	■	■	■	■		■
Temporary partial crowns	■	■	■	■		■
Temporary veneers	■	■	■	■		■
Long-term temporaries	■	■	■	■		■
Enhancement and repair of bis-acrylate temporaries					■	
Small fillings (cavity Class III, IV, V)					■	
Minimally-invasive fillings					■	
Underfillings					■	
Repair of temporary crowns and bridges					■	■
Repair of long-term crowns and bridges						■
Type of material	Bis-acrylate	Bis-acrylate	Bis-acrylate	Bis-acrylate	Composite	Composite



Temporary and Permanent Luting Cements: When to use which material?

	PermaCem 2.0	PermaCem	Vitique	LuxaCore Z Dual	TempoCemNE	TempoCem	TempoCemID
Permanent	■	■	■	■			
Temporary					■	■	■
Indications	Crowns/bridges	■	■		■	■	■
	Inlays/onlays	■	■		■	■	■
	Veneers			■			■
	Root posts	■			■		
	Implant abutments	■				■	■
Cementation	Adhesive		■	■			
	Self-adhesive	■					
	Retentive				■	■	■
Type of material	Composite	■	■	■			
	Compomere		■				
	Zinc oxide				■	■	■
Curing mode	Light-cure	■	■	■			■
	Self-cure	■	■	■	■	■	
Number of shades	3		8	3			
	A2 Universal, A3 Opaque, Transparent		A1, A2.5, A4, B1, BL, TR, White, Pink	Light opaque, A3, Blue			

Temporary and Permanent Luting Cements:

When to use which material?

	PermaCem 2.0	PermaCem Dual	Vitique	TempoCemNE	TempoCem
Metal/metal-based					
Inlays	■	□		■	■
Onlays	■	□		□	□
Crowns/bridges	■	□		■	■
Root posts	■				
On implant abutments	■				□
Silicate ceramics (e.g. lithium disilicate)					
Inlays	□	□		■	■
Onlays	□	□		□	□
Crowns/bridges	■	□		■	■
Veneers		□	■		
Oxide ceramic (zirconium oxide/aluminum oxide)					
Crowns/bridges	■	□		■	■
Root posts	■				
On implant abutments	■				□
Composite restorations					
Inlays	□	□		■	■
Onlays	□	□		□	□
Crowns	■			■	■
Root posts	■				
Veneers		□	■		

■ ■ ■ Use highly recommended

□ □ □ Use recommended

Prevention and Infiltration

When to use which material?



	Kolorz Proply Paste	Kolorz Fluoride Gel	Kolorz Fluoride Foam	ClearShield Varnish	Icon Proximal	Icon Smooth Surface
Cleaning	■					
Remineralization		■	■			
Fluoridation				■		
Dentin sensitivity				■		

Caries - intact surface	E1	■	■	■	■	■	■
	E2	□	□	□	■	■	■
	D1					■	■

Esthetics	Fluorosis						■
	Cariogenic white spots						■

■ ■ Use highly recommended
 □ □ Use recommended

Automix Guns

Automix Tips

GUN FOR 25ml CARTRIDGES IN MIXING RATIO 1:1

Type 25 1:1 Item # 110253	Suitable for LuxaCore Z Dual Honigum Pro Light/Light QuadFast Honigum Light/Light QuadFast	Automix Tips Yellow 1:1 35 × Item # 110424	Intraoral Tips Yellow 35 × Item # 110424
	Suitable for TempoCem TempoCemNE PermaCem 2.0 PermaCem Dual	Automix Tips Blue 1:1 50 × Item # 110266	

GUN FOR 50ml CARTRIDGES, MIXING RATIO 1:1

Type 50 1:1 Item # 999507	Suitable for Honigum Pro-Light/Light QuadFast Honigum-Light/Light QuadFast	Automix-Tips Yellow 1:1 35 × Item # 110424	Intraoral-Tips Yellow 35 × Item # 110424
	Suitable for Honigum Pro-Mono Honigum Pro-Heavy/Heavy QuadFast Honigum-Mono Honigum-Heavy/Heavy QUadFast	Automix-Tips Green 1:1 50 × Item # 999400	Intraoral-Tips Transparent 50 × Item # 999490
	Suitable for O-Bite	Automix-Tips Pink 1:1 50 × Item # 999202	

GUN FOR 50ml CARTRIDGES IN MIXING RATIO 10:1 / 4:1

Type 50 10:1 Item # 110411	Suitable for Luxatemp Automix Plus Luxatemp Solar Luxatemp Ultra Luxatemp Fluorescence LuxaCrown	Automix-Tips Blue 10:1 25 × Item # 110351	
	Suitable for LuxaBite	Automix-Tips Yellow 10:1 25 × Item # 110609	
	Suitable for StatusBlue	Automix-Tips Pink 4:1 25 × Item # 999797	

Mixing Tips For Syringes and Smartmix



SMARTMIX-TIPS GREEN-BLUE

Item # 110991 (25 pieces)	Suitable for Luxatemp Ultra Luxatemp Fluorescence	Item # 212040 (50 pieces)	Suitable for TempoCemNE TempoCem PermaCem 2.0 PermaCem Dual
---------------------------	---	---------------------------	---

SMARTMIX-TIPS GREEN-ORANGE

Item # 110728 (25 pieces)	Suitable for TempoCemID
---------------------------	----------------------------

SMARTMIX-TIPS

Item # 212042 (50 pieces each)	Suitable for LuxaCore Z Dual
--------------------------------	---------------------------------

SMARTMIX-TIPS INTRAORAL

Item # 212042 (50 pieces each)	Suitable for LuxaCore Z Dual
--------------------------------	---------------------------------

SMARTMIX-TIPS ENDO M

Item # 213373 (20 pieces)	Suitable for PermaCem 2.0
---------------------------	------------------------------

VENEER-TIPS

Item # 213057 (100 pieces)	Suitable for Vitique
----------------------------	-------------------------

LUER-LOCK-TIPS SILVER

Item # 220712 (20 pieces)	Suitable for Constic
---------------------------	-------------------------

DMG America, LLC
65 Challenger Road, Suite 340, Ridgefield Park, NJ 07660
tel: 800.662.6383 email: info@dmg-america.com
web: www.dmg-america.com

