

Ecusit[®]

Etch

DESCRIPTION

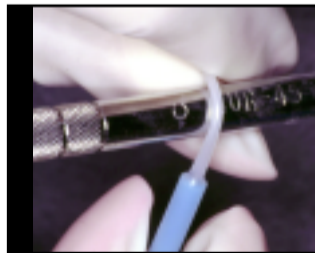
The etching gel enclosed is a water based, phosphoric acid gel. The gel is blue in color for easy identification against tooth structure.

 **DMG**
HAMBURG

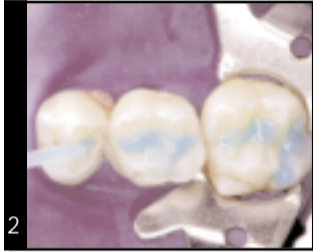
 0482

INSTRUCTIONS

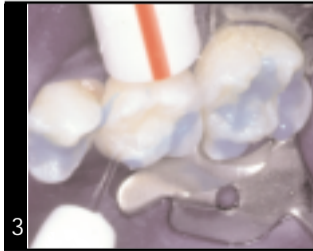
1 Insert the transparent tip of etch gel into the blue handled Ecu-PEN (**Fig 1**). To slide the Mikro-tip into place; black plunger must be flush with Ecu-PEN opening.



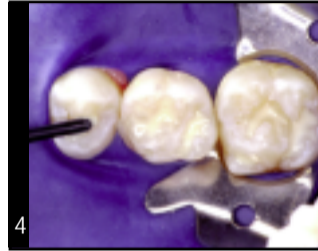
NOTE: Before insertion into the Ecu-PEN gently bend Ecusit Etch Mikro-tip at midpoint around the handle of a dental instrument to facilitate application of Ecusit Etch (**Fig 2**).



2 Place the tip of the Ecusit Etch Mikro-tip at the most distal end of the most distal tooth to be sealed. Moving towards the mesial dispense the Ecusit Etch by sliding the operator's index finger on the roller mechanism in the same direction in which the Ecu-PEN is moving (**Fig 3**). Apply the gel directly to the tooth enamel being sure to cover all bevels and keeping the acid from the dentin.



3 Allow Ecusit Etch to remain on the surface for 15 to 30 seconds. Rinse off the Ecusit Etch completely with a water spray.



4 Dry with air that is oil and water free. The enamel should have a "frosted" appearance. If "frosted" appearance is not noted, repeat steps **2**, **3** and **4**.

NOTE: On primary teeth or teeth with high fluoride content, a 60-90 second etch is recommended. Rinse thoroughly for 20 seconds. Dry with air that is oil and water free. The etched enamel should have a white chalky appearance.

CONTENTS

50 Mikro-tips Etch Gel (clear tips filled with blue etch)

INDICATIONS

Etching enamel for bonding procedures.

STERILIZATION AND INFECTION CONTROL

All capsules are for one time use. Ecu-PEN is autoclavable up to 130 °C. It will withstand 100 autoclave cycles.

COMPOSITION

Phosphoric acid
Water

PRECAUTIONS

- Do not take internally.
- Ecusit Etch contains 37% phosphoric acid. Avoid contact with soft tissue.
- In case of contact with skin or eyes, wash immediately with water.
Get medical attention for eyes.

Caution: Federal law USA restricts this device to sale by or on the order of a dentist or other practitioner licensed by the order of the state in which he or she practices to use or order the use of this device.

For questions or comments in the USA,
please call Zenith at
1-800-662-6383

No person is authorized to provide any information which deviates from the information provided in this instruction sheet.



Manufactured by: DMG CPF Hamburg

Exclusively Distributed in the United States and Canada by:
Zenith Brands Division of Foremost Dental Mfg. Co., Inc.
Telephone number: 1-800-662-6383

Material Safety Data Sheet

May be used to comply with
 OSHA's Hazard Communication Standard,
 29 CFR 1910.1200. Standard must be
 consulted for specific requirements.

U.S. Department of Labor
 Occupational Safety and Health Administration
 (Non-Mandatory Form)
 Form Approved
 OMB No. 1218-0072

IDENTITY (As Used on Label and List)		Etching Gel		Note: Blank spaces are not permitted. If any item is not applicable, or no information is available, the space must be marked to indicate that.	
Section 1		Emergency Telephone Number		800-662-6383	
Manufacturer's Name		DMG		Telephone Number for Information	
Address (Number, Street, City, State, and Zip Code)		ElbgaustraÙe 248		800-662-6383	
		22547 Hamburg		Date Prepared	
		Germany		8/96	
				Signature of Preparer (Optional)	

Section II - Hazardous Ingredients/Identify Information				
Hazardous Components (Specific Chemical Identity, Common Name(s))	OSHA PEL	AGCH TLV	Other Limits Recommended	% (Optional)
Phosphoric Acid	7664-38-2-CAS			

Section III - Physical / Chemical Characteristics				
Boiling Point	above 100 °C (Water)	Specific Gravity (20° = 1)	1.1	
Vapor Pressure (mm Hg)	< 20 mm*	Melting Point	NE*	
Vapor Density (AIR = 1)	> 1*	Evaporation Rate (Butyl Acetate = 1)	<1	
Solubility in Water	Completely Soluble			
Appearance and Odor	Odorless blue gel			

Section IV - Fire and Explosion Hazard Data				
Flash Point (Method Used)	NE	Flammable Limits	LEL	UEL
		NE*	NE*	NE*
Extinguishing Media	water, carbon dioxide, sand			
Special Fire Fighting Procedures	None			
Unusual Fire and Explosion Hazards	None			

Stability	Unstable		Conditions to Avoid
	Stable	X	
Incompatibility (Material to Avoid)	Alkali, strong bases, base metals		
Hazardous Decomposition or Byproducts	Not Known		
Hazardous Polymerization	May Occur		Conditions to Avoid
	Will Not Occur	X	
Section VI - Health Hazard Data			
Routes of Entry	Inhalation	No	Skin Yes Ingestion Yes
Health Hazards (Acute and Chronic)	Corrosive, causes burns		
Section VII - Precautions for Safe Handling and Use			
Carcinogenicity	Not Known	NTP?	IARC Monographs? OSHA Regulated?
Signs and Symptoms of Exposure	burns skin/ eyes		
Medical Conditions Generally Aggravated by Exposure	None known		
Emergency and First Aid Procedures	Skin contact: wash with soap and water. - Ingestion: drink plenty of water, seek immediate medical advice. - Eye contact: immediately rinse with water, consult a physician.		
Steps to be Taken in Case Material is Released or Spilled	Neutralize with lime water, water down and wash away with plenty of water		
Waste Disposal Method	Dispose to an authorized waste disposal site. Use proper landfill disposal or incineration in accordance with local, state and federal regulations.		
Precautions to be Taken in Handling and Storing	Wear suitable gloves, avoid contact with skin and eyes, keep container closed		
Other Precautions	None		
Section VIII - Control Measures			
Respiratory Protection (Specify Type)	None		
Ventilation	Local Exhaust	N/A**	Special N/A**
	Mechanical (General)	N/A**	Other N/A**
Protective Gloves	N/A**	Eye Protection	N/A**
Other Protective Clothing or Equipment	gloves		
Work / Hygienic Practices	Use according to directions		