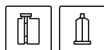


# Honigum<sup>®</sup>-Heavy

# Honigum<sup>®</sup>-Light



## QuadFast



904987/11.2004

### Instructions for use

English

Honigum-Heavy QuadFast is an innovative pre-impression material based on A-silicones. Honigum-Heavy QuadFast is available in two different application forms: ready-to-use pre-filled MixStar cartridges suitable for use in DMG MixStar and other commercially available mixing machines, and 50 ml Automix safety-cartridge for use in Automix-Dispenser Type 50 1:1. Honigum-Light QuadFast is the corresponding wash impression material based on addition curing silicones. Honigum-Light QuadFast is available in 25 ml Automix safety-cartridge for use in Automix-Dispenser Type 25 1:1. Both materials are specifically designed for extremely precise quadrant and single unit impressions.

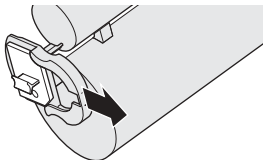
### Indication

One step (two viscosity technique) precision impressions, for quadrant or single-unit cases.

### Handling of Application Systems

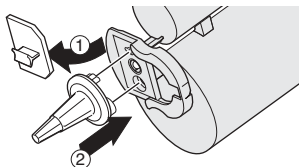
#### Honigum-Heavy in MixStar-cartridge

Please also refer to the instructions of the mixing unit.

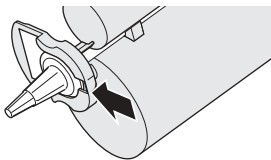


1. Slide locking mechanism into open position.

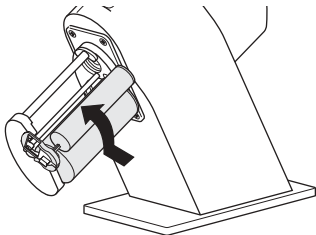
**Do not remove the locking mechanism from the cartridge.**



2. Remove and discard the cap on the openings of base and catalyst outlets and attach a new mixing tip. Seat mixing tip completely.



3. Secure the mixing tip by sliding the locking mechanism into locked position.



4. Insert the cartridge into the mixing unit. A short chime confirms the proper insertion of the cartridge.

**Fresh cartridges are readied by discarding the first 3 cm of impression material that is extruded.**

**Leave used tip on the cartridge after use. It serves as a cap.**

### Use in Other Mixing Units

When using the MixStar-cartridge in mixing units of other manufacturers, insert the cartridge into the unit without the mixing tip first since, in this case, proper mixing is not warranted. Proceed in this case as described in "Exchanging the Mixing Tip" and refer to the instructions for use of the corresponding equipment.

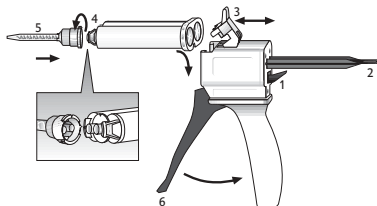
### Attaching a Mixing Tip

Attach a new mixing tip before each use. Discard the old mixing tip and remove possible blockings from the cartridge openings. Attach a new mixing tip on the hex drive rod first. Please ensure that the drive rod properly engages the mixing tip by slightly rotating it. Then attach the tip completely to the cartridge.

### Honigum-Heavy and Honigum-Light in Automix-cartridge

For Honigum-Heavy QuadFast use the Automix-Dispenser Type 50 1:1.

For Honigum-Light QuadFast use Automix-Dispenser Type 25 1:1.



1. Push up the small lever (1) in the back of the Applicator Gun and completely retract slide (2). Lift plastic lever (3) on top of gun and



- insert cartridge. Note that notch on bottom of cartridge aligns with the notch on Applicator Gun. Push down firmly on lever (3) to lock in cartridge.
2. Before attaching a mixing tip, remove cartridge cap (4) by turning 90° counter clockwise, pull and remove it. Insert a new mixing tip (5). Line up the notch on the tip with the corresponding notch on the cartridge. Turn it clockwise 90° until it locks in position.
  3. The material is mixed in the tip by pulling the trigger (6) of the dispenser and can be applied directly.

**When using a cartridge for the first time, express a "pea" size amount of material and discard.**

**Leave the used tip on the cartridge until next use. It serves as a cap.**

4. Push up lever (1) in the back of the Applicator Gun and pull slide (2) flush. Lift plastic lever (3) on the top of gun and remove cartridge.

## **Impression Taking – Double-Bite Technique**

The Double-Bite Technique is a time and money saving procedure that captures the impressed area, the counter area and the bite registration all in one impression.

- Step 1 Place an unloaded double-bite tray into the patient's mouth, making sure that the crossbar and walls of the tray are clear of dentition. In case of insufficient space between the teeth and walls of the tray, a sideless tray should be substituted.
- Step 2 Have the patient close in centric occlusion. The patient should be informed to remember this position and be able to readily reproduce it.
- Step 3 Have assistant load Honigum-Heavy QuadFast onto both sides of the double-bite tray. While loading the tray, the mixing tip should always be immersed in the material to avoid air bubbles. A tray adhesive such as Zenith/DMG's Tray Adhesive for A-Silicones is generally recommended (for specific information, refer to manufacturers instructions for use).  
While assistant is loading the double-bite tray, dispense Honigum-Light QuadFast directly onto teeth into critical detail areas.
- Step 4 Insert loaded double-bite tray into mouth no later than 1:15 minutes from beginning of dispensing. As in Step 1, make sure that crossbar and walls are clear of dentition. Have patient close in centric occlusion, as they had in Step 2.
- Step 5 After tray has been in the mouth for 2:00 minutes, remove and inspect final impression.  
Do not use with condensation curing silicone or polyether impression material!

## **Removal**

Remove the impressions parallel to the axis of the prepared teeth. After removal clean well with water and disinfect the impression.

## **Desinfection**

Use only dipping solutions for the disinfection of the impression. Recommended is the use of a 2% glutaraldehyde solution. Please ensure that the used disinfectant is indicated for the use with addition curing silicone impression material.

After removal from the mouth, clean impression under running water for 15 seconds. Leave the impression in the disinfecting solution for about 10 to 15 minutes. Then rinse off the disinfection solution for 15 seconds under running water.

ADA recommends to follow Council on Dental Materials, Instruments and Equipment. Disinfection of impressions. JADA 1991;122(3):110; [www.ada.org](http://www.ada.org) (Übersetzung fehlt noch)



## Casting and Galvanisation

After disinfection, dry impression and store at normal room temperature (max. 78°F / 25°C). Impression should be poured 30 minutes at the earliest after removal from the mouth. We recommend using special purpose hard plaster (ISO 6873, Type 3; e.g. Moldano, Bayer) for the cast and an ultra hard dental plaster for the forms (ISO 6873, Type 4; e.g. Fujirock II, GC). Honigum impressions can be copper- or silverplated.

## Storage of the Impression

The impression should be stored at normal room temperature (max. 25 °C/78 °F). They are stable and can be poured even after months without loss of accuracy.

## Note

- Never allow the impression to come into contact with organic solvents or liquids, containing same, as this may result in swelling of the material and therefore may lead to inaccuracies.
- Possible residues of retraction aids can increase setting time.
- Avoid contact of the material with latex gloves. The use of gloves based on PVC or PE is recommended.

## Technical Data

	Heavy	Light
Working time*	1:15 min	1:30 min
Recommended time in mouth	≥ 2:00 min	2:00 min
Dimensional change after 24 h	≤ 0.4%	0.5%
Compression set	≤ 0.5%	0.35%
Strain in compression	≈ 1.4%	3.9%

\* Times refer to normal room temperature (23 °C/72 °F) and a normal relative humidity of air (50%). Higher temperatures shorten, lower temperatures increase those times.

## Composition

Addition curing polysiloxanes, silicon dioxide, food pigments, additives, platinum catalyst

## Classification

Honigum-Heavy QuadFast meets the requirements of ISO 4823:2000, Type 1: Heavy bodied consistency. Honigum-Light QuadFast meets the requirements of ISO 4823:2000, Type 3: Light-bodied consistency.

## Storage

Store and use dry and at room temperature ≤ 25 °C/77 °F. We recommend not to store the material in the refrigerator. Leave the used mixing tip on the cartridge after use. It serves as a cap. Do not use after expiry date.

## Packaging

### Honigum-MixStar Heavy QuadFast

1 cartridge @ 390 ml paste, 10 MixStar-Tips REF 999638

### Honigum-Heavy QuadFast

4 cartridge @ 50 ml paste, 12 Automix-Tips REF 999766

### Honigum-Light QuadFast

4 cartridges @ 25 ml paste, 16 Automix-Tips, 16 Intraoral-Tips REF 999639

Federal law (USA) restricts this device to sale by, or on the order of a dentist, or other practitioner licensed by law of the state in which he or she practices to use or order the use of this device.

Keep away from children. For dental use only.

