



# Impression Technique for Full Arch Screw Retained Prosthesis

Written by Celin Arce, DDS, MS, FACP

## Technique Description

1. Verify implants and soft tissue are ready for final impression
2. Place open tray impression posts with LuxaBite verification jigs
3. Join verification jig with LuxaFlow<sup>®</sup> composite and light polymerize
4. Inject Honigum Pro Light around the impression posts and custom tray filled with Honigum Pro Heavy Body
5. Verify final impression of implants with excellent surface details capture
6. Attach implant analogs and pour impression with stone

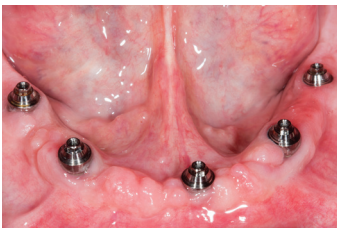


Fig 1. Implants for full arch screw retained prosthesis

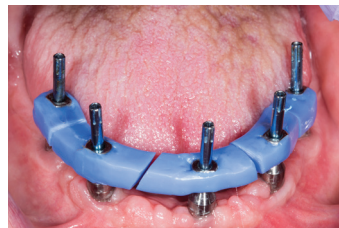


Fig 2. Open tray impression posts with LuxaBite jigs

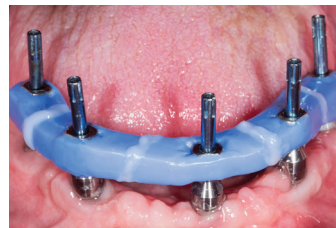


Fig 3. Verification jig joined intraorally with LuxaFlow

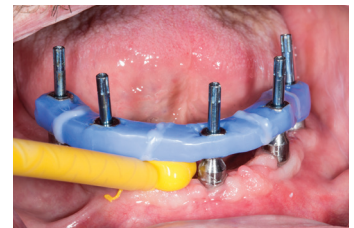


Fig 4. Injection of Honigum Pro Light around impression posts



Fig 5. Injection of Honigum Pro Light around impression posts

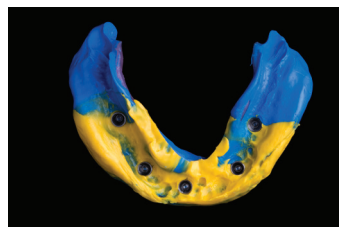


Fig 6. Final Impression



Fig 7. Master cast