



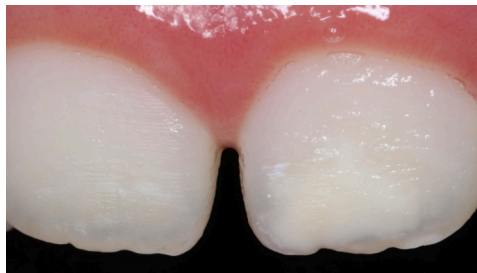
# QUICK CASE: Carla Cohn, DMD



## Icon® Caries Infiltrant Smooth Surface Treatment

### OVERVIEW

- ↗ 6 year old female, tooth #21
- ↗ Molar incisor hypomineralization



Before treatment



Immediately after treatment

#### PRE-TREAT

- 1**
  - ↗ Pumiced
  - ↗ Abraded with coarse disc

#### ETCH

- 2**
  - ↗ Etched according to manufacturer's instructions

#### INFILTRATE

- 3**
  - ↗ Allowed infiltrant to penetrate for 18 mins.
  - ↗ No light exposure prior to light cure

*Be sure to follow all of the manufacturer's instructions for use. All steps were performed but not included in this case document.*