



# Ecosite Bulk Fill & Ecosite Bond

The perfect pair

 **DMG**

# The Next Generation Bulk Fill

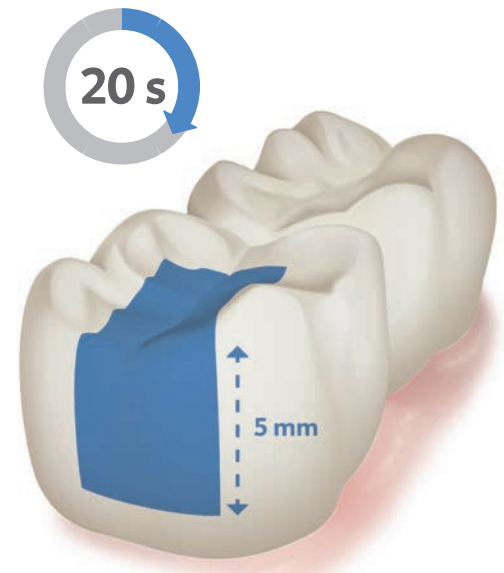
Designed to deliver superior esthetics and perfect adaptation with one quick 20-second light cure, Ecosite Bulk Fill is the new generation of bulk fill composites for all your posterior restorations.

**Fill up to 5mm—no capping layer needed.**

## Where Speed and Beauty Become One

The one-step Ecosite Bulk Fill provides time savings, precision handling and other material properties including:

- Quick, 20-second light cure
- Excellent adaptation, packability, and handling
- High polishability for superior esthetics
- Low shrinkage stress
- Does not stick to instruments
- Fluoride-releasing
- Functional and practical shade system



**Reliable curing in only 20 seconds**

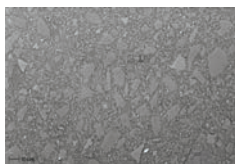
(Incident Irradiance >800mW/cm2)\*\*

## Ecosite Filler Technology

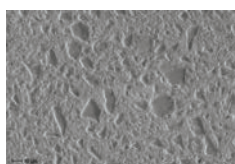
Ecosite's special nano-technology enables extremely homogeneous distribution of submicron particles ensuring outstanding low shrinkage stress and optimum polishability for a high shine finish.



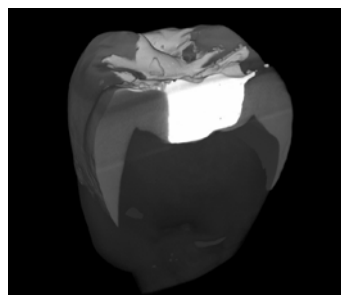
Ecosite Bulk Fill



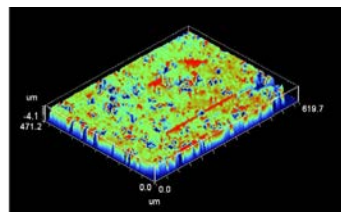
SonicFill™ (Kerr)\*



X-tra Fil™ (Voco)\*

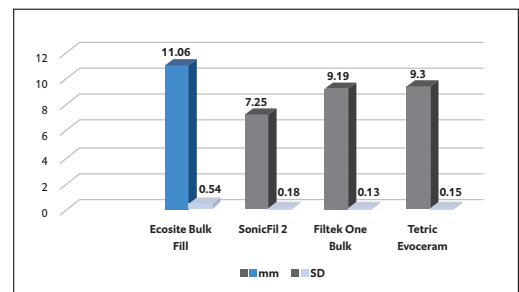


Micro CT Scan-Marginal Adaption Ecosite Bulk Fill Cross Sectional Image\*\*



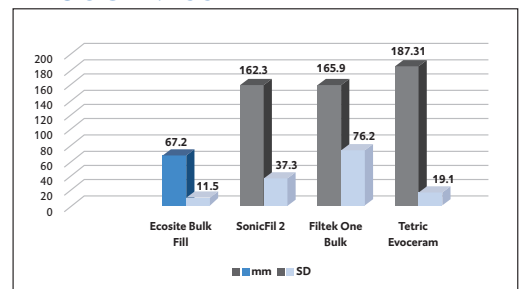
3D image of Ecosite Bulk Fill Surface\*\*

### DEPTH OF CURE



Ecosite Bulk Fill showed the highest depth of cure by solvent resistance when compared to other composite materials.\*\*

### ROUGHNESS



Ecosite Bulk Fill showed the lowest roughness values.\*\*

Image Source: Internal REM images, DMG, 2018.

\*These brands are not registered trademarks of DMG.

\*\*Source: M. Vargas, E Teixeira, S. Armstrong / University of Iowa Department of Operative Dentistry: IADR 2019 Poster - Performance of different bulk-fill dental composite materials

# The Ecosite Bond

Ecosite Bond is the perfect pair for Ecosite Bulk Fill and the ideal companion when working with other composites.

The light-curing, 1-bottle universal bonding agent provides optimal bond strength.

Studies performed showed that Ecosite Bond produced excellent bond strengths to dentin and enamel in self-etch and total-etch modes. There were no bonding failures between Ecosite Bond and Ecosite Bulk Fill indicating compatibility between these materials.\*\*\*

RESULTS SUMMARY, MEANS (STANDARD DEVIATION) ***				
Substrate	Dentin		Enamel	
	Self-Etch (n=8)	Total-Etch (n=8)	Self-Etch (n=8)	Total-Etch (n=8)
Bond Strength, MPa	30.0 (5.0)	32.7 (4.5)	21.1 (3.0)	26.8 (3.8)
Adhesive Failure Mode, %	62.5%	75%	100%	100%
Mixed Failure Mode, %	37.5%	25%	0%	0%

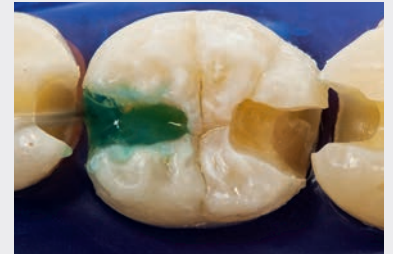
Additional testing displayed zero debonding failures at the composite to adhesive interface indicating the compatibility of Ecosite Bulk Fill to the other generations of bonding agents in the study.\*\*\*\*

BOND STRENGTH RESULTS SUMMARY, MPa ****				
	Clearfil Photo Bond	Prime & Bond NT	Futura Bond M	Ecosite Bond
24h	25.2 (8.0)	32.7 (9.2)	20.0 (3.6)	30.0 (5.0)
5000 TC	17.9 (6.3)	27.9 (6.3)	20.8 (4.4)	30.1 (7.3)

## Etch As You Wish

It offers freedom with your etching mode and is ideal for direct restorations of light-cured composite materials.

Regardless of etching mode, Ecosite Bond demonstrates optimum bond strength in any situation.



Total-Etch Mode



Self-Etch Mode



Select-Etch Mode

## REAL SINGLE-LAYER TECHNOLOGY UP TO 5MM



Initial situation: Class II mesial lesion in tooth 36 identified by bite-wing x-ray examination.



Preparation of the cavity and sectional matrix placement.



Adaptation of the material to the cavity.



Final result, excellent polishability.

\*\*\*Source: M. Cowen, J.M. Powers, "Bond Strength of Ecosite Bond" - The Dental Advisor

\*\*\*\*Source: M. Cowen, J.M. Powers, "Compatibility of Ecosite Bulk Fill to Bonding Agents" - The Dental Advisor



# Ecosite Bulk Fill Is Indicated For

- Restorations in the posterior region (classes I and II, including replacement of individual cusps)
- Restorations of Class V (cervical caries, root erosion, wedge-shaped defects)
- Core build-ups
- Restorations of deciduous teeth

## Available in 3 Shades

Ecosite Bulk Fill offers a functional and practical shade system with two all-purpose and esthetic shades, Universal and Light, including Contrast where contrast with the tooth is desirable.

The two esthetic shades are an ideal color match with the surrounding tooth structure.



## Ordering Information

### Ecosite

Item#	Product	Contents
220750	Ecosite Bulk Fill Syringe Intro Kit	3 Syringes of 4g in the Shades Universal (2 x), Light (1 x), 1-5mL Bottle of Ecosite Bond
220751	Ecosite Bulk Fill Safetips Intro Kit	48 Safetips of .25g in the Shades Universal (32 x), Light (16 x), 1-5mL Bottle of Ecosite Bond
220752	Ecosite Bulk Fill Syringe - Light	1 Syringe of 4g, Shade Light
220753	Ecosite Bulk Fill Syringe - Universal	1 Syringe of 4g, Shade Universal
220754	Ecosite Bulk Fill Syringe - Contrast	1 Syringe of 4g, Shade Contrast
220755	Ecosite Bulk Fill Safetips - Light	16 Safetips of .25g, Shade Light
220756	Ecosite Bulk Fill Safetips - Universal	16 Safetips of .25g, Shade Universal
220757	Ecosite Bulk Fill Safetips - Contrast	16 Safetips of .25g, Shade Contrast
220758	Ecosite Bond	1-5mL Bottle of Ecosite Bond
220600	DMG Composite Dispenser	1 Composite Dispenser



DMG America, LLC  
 65 Challenger Road, Suite 340, Ridgefield Park, NJ 07660  
 tel: 800.662.6383 email: info@dmg-america.com  
 web: www.dmg-america.com

