

Addressing Serious Issues Related to Endodontically Treated Teeth:

Catastrophic root fractures and ditching composite-dentin preps.



Catastrophic Root Fractures Involves Flexural Modulus

- ↪ Flexural modulus refers to a material's resistance to being deflected under a load and how it rebounds after load
- ↪ We need to understand that dental materials used in combination must deflect similarly to a load placed upon them
- ↪ Whenever the cement, endodontic post and core material do not deflect and rebound at similar rates, stresses build between them



Step by Step

Core build-up and cementation of root posts with Luxapost, LuxaBond-Total Etch and LuxaCore Z-Dual

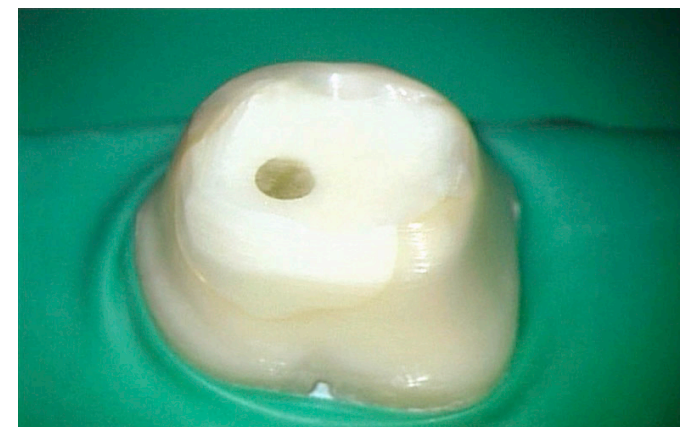
Prof. Stefen Koubi





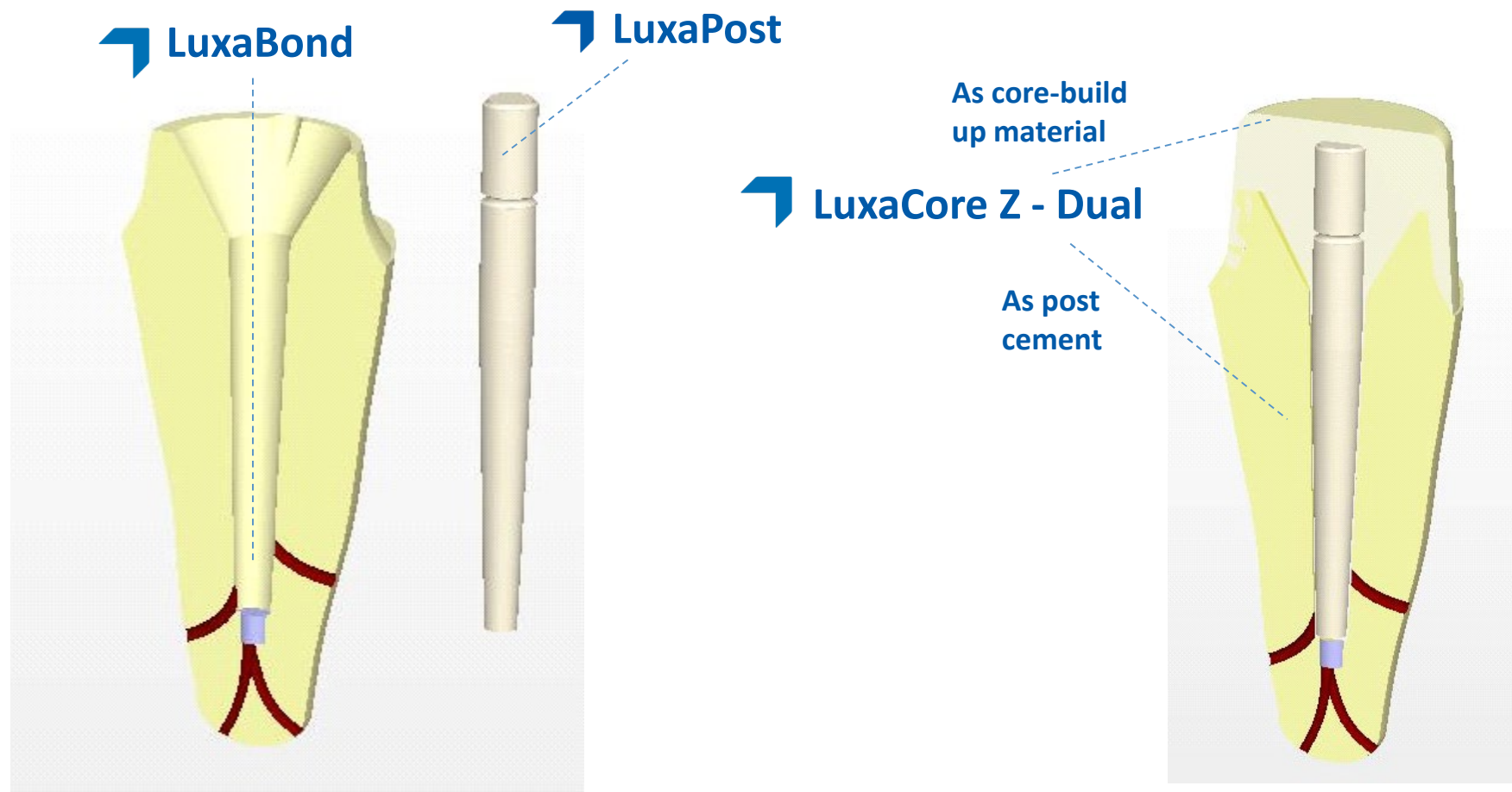
Cuttability

- ↪ Critical property in resin core materials
- ↪ A dentin-like cutting rate and feel is highly desirable
- ↪ “Substance Removal” tests determine a material’s cutting rate
- ↪ **LuxaCore Z Dual** has a cutting rate virtually identical to natural dentin





Monoblock: The Ideal Restorative System





Monoblock System Advantages

- ↪ Good physical properties: light transmission, flexural strength, elasticity modulus
- ↪ Stress reduction
- ↪ Reduced risk of root fractures
- ↪ Minimized tension peaks
- ↪ Anatomical form for substance saving treatments
- ↪ Protection against bacterial leakage (coronal and apical)
- ↪ Long lasting and beautiful restoration
- ↪ High esthetics
- ↪ Cost savings





LuxaCore Z-Dual: At a Glance

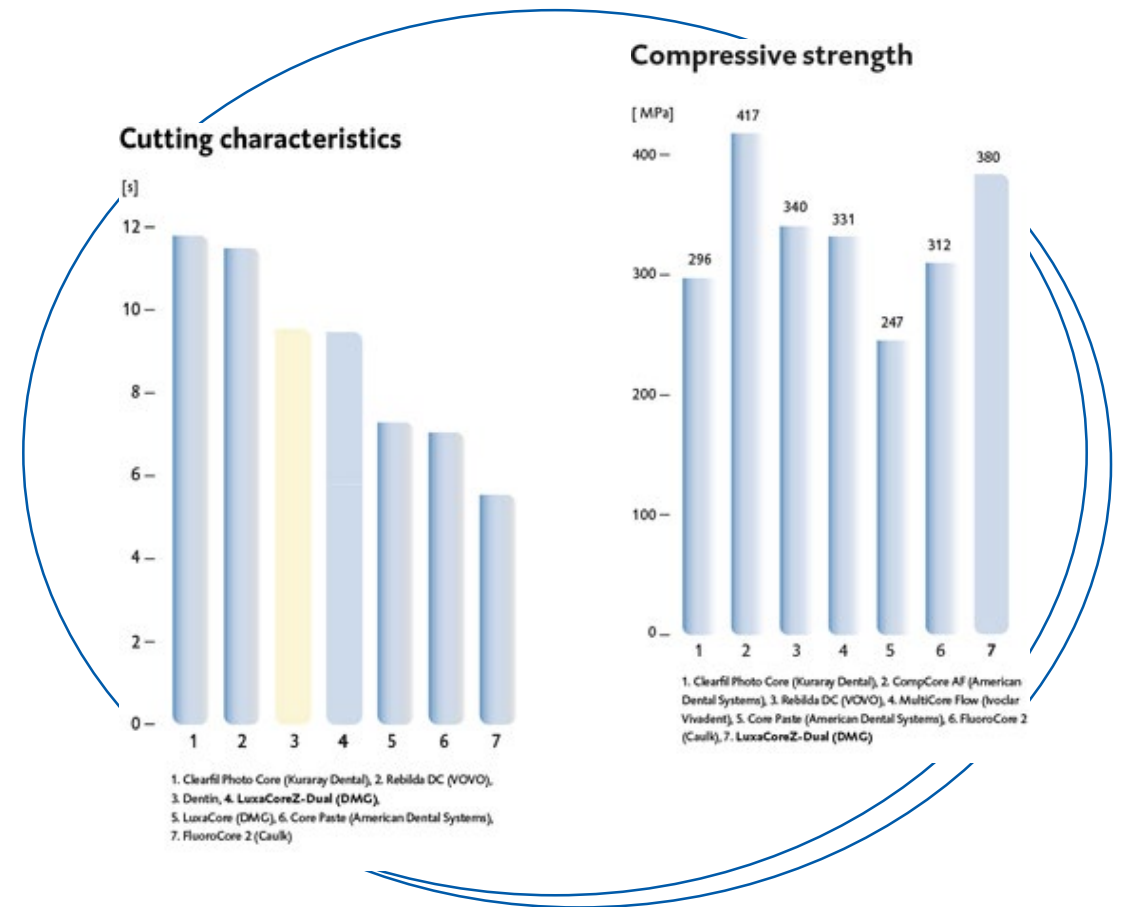
- ▶ Ultra-strong, ultra-reliable core build-up material created with Zirconia
- ▶ Its combination of zirconia filler with DMG's patented nanotechnology means it significantly improves strength, flowability and physical properties—the ultimate in resin technology
- ▶ Works for your post cementing needs





LuxaCore Z-Dual Features & Benefits

- Cuts remarkably like natural dentin
- Exceptionally high compressive strength for enhanced stability
- Patented nanotechnology prevents particle agglomeration
- Better handling characteristics
- Film thickness of precision cement
- Smoother material with enhanced flow
- More stable, firmer, easier to form





LuxaBond Total Etch

- ▶ Compatible with self-curing and dual-curing composite resin materials
- ▶ Better adhesion with more reliable total bond strength
- ▶ Pre-Bond facilitates quicker curing in the dentine for superior retention and deeper penetration
- ▶ Indicated for bonding of posts, cores, crowns, bridges, inlays and onlays
- ▶ Easy root canal application with special Endobrushes
- ▶ Acetone-free
- ▶ Flexible working time





LuxaCore Z-Dual Product Information



Product & Contents	DMG America Item #
LuxaCore Z-Dual Automix Intro Kit-Natural/A3 (1-48gm Cartridge, 35 each-Automix & Intraoral Tips)	213330
LuxaCore Z-Dual Automix Intro Kit-Blue(1-48gm Cartridge, 35 each-Automix & Intraoral Tips)	213331
LuxaCore Z-Dual Automix Intro Kit-Light Opaque(1-48gm Cartridge, 35 each-Automix & Intraoral Tips)	213332
LuxaCore Z-Dual Smartmix Intro Kit-Natural/A3 (2-9gm Syringe, 10 each-Smartmix & Intraoral Tips)	213334
LuxaCore Z-Dual Smartmix Intro Kit-Blue(2-9gm Syringe, 10 each-Smartmix & Intraoral Tips)	213335
LuxaCore Z-Dual Smartmix Intro Kit-Light Opaque (2-9gm Syringe, 10 each-Smartmix & Intraoral Tips)	213336





LuxaPost Product Information



Product & Contents	DMG America Item #
LuxaPost Intro Kit (5 each of-1.25mm Posts, 1.375mm Posts, 1.5mm Posts, 1 each of-1.25mm Drill, 1.375mm Drill, 1.5mm Drill, 30-Silicone Stops, 1-Measuring Card)	110780
LuxaPost Refill Kit-1.25 mm (5-1.25mm Posts)	110781
LuxaPost Refill Kit-1.375 mm (5-1.375mm Posts)	110782
LuxaPost Refill Kit-1.5 mm (5-1.5mm Posts)	110783
LuxaPost Refill Drill-1.25 mm (1-1.25mm Drill)	110784
LuxaPost Refill Drill-1.375 mm (1-1.375mm Drill)	110785
LuxaPost Refill Drill-1.50 mm (1-1.5mm Drill)	110786



LuxaBond Total Etch Product Information



Product & Contents	DMG America Item #
LuxaBond Total Etch Intro Kit (1-1.5ml Pre-Bond, 1-1.5ml Bottle Bond A, 1-1.5ml Bottle Bond B, 1-2ml Syringe Etch Gel Medium Viscosity, 25-Red Endobrushes, 25-Black Endobrushes, 3-Luer Lock Tips, 1 Mixing Palette)	212384
LuxaPost Refill Kit-1.25 mm (5-1.25mm Posts)	212385



Product Images

