



 New!

Ecosite One:
Simply matches.
Always.



A smile ahead together



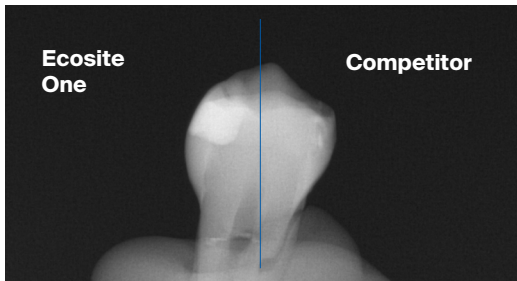
Ecosite One

A faster procedure for dentists, a stunning result for patients

Vita teeth filled with Ecosite One.



Ecosite One is the innovative one-shade composite that's setting new standards in the field of posterior restorations with ONE shade. The material's Push-and-Flow effect combined with accurate color matching contribute to **outstanding esthetics** that will impress clinicians who opt for composite layering technology, and want to save valuable time in the process.



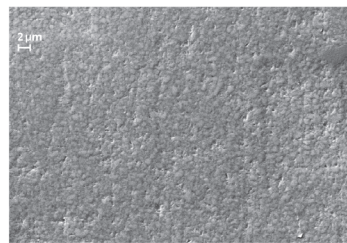
Ecosite One with clearly defined margins is visible on X-ray as compared to the leading competitor one-shade composite.

Features and Benefits

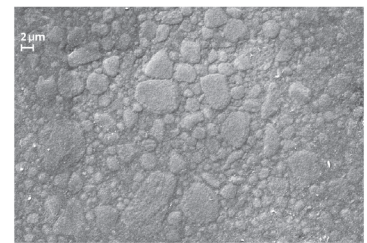
- Excellent esthetics and color matching with one shade
- High stain resistance* for reliable, long-term color stability
- Saves time with a 3mm curing depth and 10 sec rapid cure
- Highly radiopaque
- Push-and-Flow effect for excellent handling
- Effortless polishability for a high-gloss finish
- Low shrinkage stress minimizes voids and cracks

Use it confidently for

- Class I and II posterior fillings, including individual cusps
- Class V fillings
- Core build-up
- Extended fissure sealing
- Restorations in deciduous teeth



Ecosite Elements
2000x magnification



Filtek Supreme XTE (3M ESPE)
2000x magnification

Source: Internal Images, DMG, 2018



Read the full [Dental Advisor Evaluation](#)

Product & Contents

- 222900 - Ecosite One Syringe, 1 @ 4gm ea
- 222901 - Ecosite One Safetips, 16 @ .25gm ea

*The Dental Advisor, Translating the Science, April 2024